



Wath
Academy
Sixth Form

Prospectus

A-Level & Applied Qualifications





Principal's Welcome

This prospectus gives an insight into the exciting range of experiences available at Wath Academy Sixth Form, from our broad and balanced curriculum, which is delivered via world-class learning, to our extensive extra-curricular programme designed to provide enjoyable, enriching and character developing experiences.

Throughout the following pages, we hope our passion and vision of 'delivering exceptional learning experiences which enable all young people to thrive in a competitive world and lead successful and fulfilling lives' shines through.

The academic outcomes at Wath Academy Sixth Form are consistently strong. Each year, for the last three years, we have achieved our best ever outcomes. We are very proud of the wide range of academic qualifications and applied courses we offer, including our scholarship programmes. As well as our superb academic offer, we truly value experiences beyond the classroom.

Our extensive enrichment programme provides students with the opportunity to broaden their horizons whilst also gaining the knowledge, skills and experiences needed to thrive in later life.

As well as our academic and enrichment offers, we have a dedicated team of staff who will support students through their two year journey. This includes expert support through the UCAS process.

OUR 7 KEY DRIVERS UNDERPIN EVERYTHING WE DO:

- **World-class learning**
- **Highest expectations**
- **No excuses**
- **Growth mindset**
- **Never give up**
- **Everyone is valued**
- **Integrity.**

We genuinely believe that when students demonstrate these habits on a daily basis they will develop the characteristics which will allow them to go on and live happy and successful lives.

Our academic and vocational offers, commitment to an enriching experience and our aspirational Key Drivers mean that Wath Academy Sixth Form is an exciting place to continue your studies.



Mr L Ransome
Principal



Head of Sixth Form

Wath Academy Sixth Form is a place where you will develop, grow and flourish; it is your gateway to your future career and life. This prospectus gives you details about the range of courses on offer, both A-level and Applied subjects. In our Enrichment block, we also offer the Extended Project (EPQ), Core Maths and Further Maths qualifications which are equivalent to an AS-level.

The friendly and supportive environment is combined with strong academic success and together they make Wath a fantastic place to study. In joining us, we expect you to commit yourself to our high aspirations and expectations and, in return, you will become a valued member of our close community, where we will do everything possible to ensure that you thrive and succeed.

As a learning community we celebrate achievement, value individuals and respect diversity. We seek to enrich the experiences of our students and provide learning opportunities which inspire every student to achieve excellence.

We offer a varied enrichment programme that includes many opportunities for extra-curricular activities and work experience for all. Our aim is to produce well-balanced, responsible young adults, fully prepared to take their place in Higher Education and the world of work, including through apprenticeships.

At Wath, students will receive the best that a traditional Sixth Form education can offer in an outstanding, modern environment. Whatever your choice of subjects, your choice of career, your interests, you will find Wath a challenging, enjoyable and exciting place to be.



Mr C Shaw
Head of Sixth Form



General Information

ENTRANCE TO THE SIXTH FORM

We offer two bands, leading to level 3 qualifications:

A-Level

Students should have a minimum of a grade 5 in GCSE English Language and Mathematics. You should also have three grade 5s (or equivalent) from three other subjects. Please do also take note of subject specific entry requirements.

Applied

You should have at least a grade 4 in GCSE English Language and Mathematics.

ATTENDANCE

Attendance at all lessons is compulsory. Failure to attend a lesson without good reason leads to disciplinary measures being taken.

REGISTRATION

You must register daily with your Form Tutor at 8.30 am.

APPEARANCE

Sixth Formers should be smart at all times, as they set the standard for the whole school. Hair should be a natural colour with no extreme styles and any accessories must be black. Make-up must not be visible (false eyelashes, unnatural looking eyebrows or fake tan are not permitted). Only one pair of small silver or gold ear studs and one watch are allowed. Facial piercing, false nails, nail varnish (except clear), bandanas, badges (except issued by the academy), caps/hats, jewellery, coloured earrings or visible tattoos are not allowed.

UNIFORM

Wath Sixth Formers wear uniform.

- Plain black blazer with Sixth Form badge
- Single Academy Approved Skirt
- Formal plain black trousers with no pattern or zips
- Plain white collared shirt with no logos
- Sixth Form clip on tie
- All black leather or leather look shoes (no tags, coloured stitching, velcro or zip fastening)
- Black ankle length socks must be worn with all trousers
- Belts, if worn, must be plain black with no patterns or indentations
- Lanyards must be worn at all times in school around the neck.
- A jumper is optional, but when one is worn, it should be a plain black v-neck jumper.
- Outdoor coats must be dark in colour (no hoodies, leather or denim outdoor coats/jackets)

Details of the uniform policy are available on our school website: www.wathacademy.com





General Information

BEHAVIOUR

Behaviour by Sixth Formers has to be exemplary at all times. Self-discipline is a basic requirement of the school.

PASTORAL SUPPORT

We have set-up a structure where each student has direct access and constant communication with their Head of Year, KS5 Student Support Leader and Sixth Form Administrator, these are responsible for students' academic progress and pastoral welfare within the academy. All members of staff within the sixth form team work closely with your tutor to ensure all students are fully supported and encouraged to fulfil their potential. Our receptionists will book meetings with the sixth form team in the first instance, before a meeting can be booked with a Vice Principal or Principal.

ASSEMBLY

The Sixth Form Business Assembly takes place once a week in the Sixth Form Study Area. Attendance is compulsory.

PRIVATE STUDY

Students' private study time should be spent working in appropriately allocated areas around the school.

HOLIDAYS

Students should not take holidays in school time. The school will accept no responsibility for a student's poor academic performance in such cases. No holiday during term time will be approved. If a student takes a holiday and this affects their ability to sit and pass their exams, we reserve the right not to enter them.

EXAMINATIONS

Teachers will set school tests, assessments and exams as frequently as they wish, and at least once every half term. Entrance for public examinations is strictly on merit. Fees for the sitting of exams are paid by the school. Students absent from exams paid for by the school are required to reimburse the school. Transition from Y12 to Y13 is dependent upon a successful review of progress at the end of Y12. This will include an assessment of internal examination results, conduct, motivation, attendance and punctuality.

TARGET SETTING

The Sixth Form runs a target setting scheme for all students. Students are expected to perform as well or better than they did at GCSE; targets are discussed with subject teachers, personal tutors and Heads of Sixth at appropriate times.

REPORTS

Our reporting and Investment in Learning system is designed to ensure that parents/carers are quickly aware of any academic problems that their children are having. Reports are sent out to parents regularly during each year.

REFERENCES

References for Higher Education and jobs are compiled by the Heads of Sixth and a team of Reference Tutors, based on comments from teachers and personal tutors. All references are read and signed by the Principal.



General Information

STUDENT BURSARY

A Student Bursary is available for students who are looked after, a care leaver, claiming income support in their own right, or who is disabled and claiming Disability Living Allowance and Employment Support Allowance. Other students, where the family income is less than £21,000 per annum, can also make a claim. Further details are available from the KS5 Student Support Leader.

SIXTH FORM STUDY AREA

During lesson times, those students with study periods can use the Study Area to complete work. This is also a social area for Sixth Formers to use at break and lunchtime.

LIBRARY

The Library aims to support new ways of learning in a world revolutionised by Information and Communication Technology. All students have their own email address and access to the internet, combined with a wide choice of

software options on the school's network. The Library is open to Sixth Form students from 8am to 4pm during the school term.

CAREERS

You can ask for a careers interview at any time. This can be with your Tutor, a teacher in the school or from an impartial advisor who works in the school.

EXTRA-CURRICULAR ACTIVITIES

Sixth Formers are encouraged to involve themselves in music, drama, sport, outdoor pursuits, debates, house and inter-school competitions, societies, clubs etc. We are very proud of our enrichment programme that we offer on a Wednesday afternoon and expect all students to participate in some form of enrichment during Y12.

DUKE OF EDINBURGH'S AWARD

The award is open to all Sixth Formers who feel able to accept the challenge.





Our Curriculum Intent

ALL STUDENTS DEVELOP AN INNER BELIEF AND AMBITION TO FULFIL THEIR DREAMS

Students acquire the knowledge, skills and character needed to live happy, healthy and successful lives. All are included and work hard to fulfil their potential regardless of background or starting point.

ALL STUDENTS DEVELOP A PASSION FOR LIFE-LONG LEARNING

An appetite for acquiring further knowledge, skills and awareness throughout their lives.

ALL STUDENTS GAIN FIRST RATE QUALIFICATIONS

Qualifications that ensure all doors remain open, giving our students the platform to compete and thrive on a global stage.

ALL STUDENTS DEVELOP EXCEPTIONAL CHARACTER

Character that exemplifies a true growth mindset, a phenomenal work ethic, confidence and high levels of grit, resilience and determination; ensuring they are fully prepared to flourish in an ever-changing world.

ALL STUDENTS DEVELOP HIGH LEVELS OF CULTURAL AND GLOBAL AWARENESS

Awareness that develops through diverse experiences that enrich our students, enabling them to engage in, empathise with, challenge and debate current affairs beyond their local community.

ALL STUDENTS DEVELOP A LOVE OF READING

All students become confident, invested readers who see the power of texts in fostering imagination and curiosity; driving their education, personal development and success in life.

ALL STUDENTS BECOME RESPONSIBLE CITIZENS

Students that are responsible members of both the school and local community; who grow into grounded and humble adults, making a positive contribution to society.

ALL STUDENTS GAIN AN ARRAY OF POSITIVE SCHOOL MEMORIES

Positive school memories which last a lifetime. Memories that are created from students, staff and our community being fully invested in forging exceptional relationships based on trust, care, high expectations and a passion for genuinely making a difference.

Wath Academy

Delivering exceptional learning experiences that enable all young people to thrive in a competitive world and lead successful and fulfilling lives



Our Key Drivers

World-class learning

World-class learning every lesson, every day

The highest expectations

Everyone can be successful; always expect the highest standards

No excuses

Create solutions not excuses; make positive thinking a habit

Growth mindset

Believe you can improve; work hard and value feedback

Never give up

Resilience is essential; be relentless in the pursuit of excellence

Everyone is valued

Diversity is celebrated; see the best in everyone

Integrity

Be trustworthy and honest; deliver on promises and walk the talk



Our Sixth Form Culture

VESPA is part of the tutor programme at Wath Academy Sixth Form. The aim of **VESPA** is to assist students in the challenging transition from GCSE to A Level study, where there is an increased need for a proactive, resilient and independent approach to study. Each letter of the acronym represents an area that students will develop during their time in the Sixth Form at Wath Academy:

VISION is about having a clear goal. A wealth of research highlights that both long-term and short-term goal setting enhances achievement. In simple terms, it is about learners knowing the outcomes they wish to achieve.

EFFORT (sometimes called academic perseverance) refers to how much hard work a student does; performance on most tasks depends on effort that is proactive and independent.

SYSTEMS is about two things:

1. a system to organise learning so students can make sense of it all;
2. a system to organise their time so students can complete key tasks to meet deadlines.

PRACTICE should be considered as distinct from effort – it refers to what learners do with the time they put into their studies. Practice is not the 'how much?' but rather the 'how?'.

ATTITUDE has four elements:

1. confidence (in particular, confidence in abilities);
2. emotional control;
3. academic buoyancy;
4. growth mindset.

Research suggests that all students need an element of these five aspects in order to achieve their full potential, meaning they are crucial for success. Through tutor support, assemblies and coaching, we provide students with activities, tools and guidance to support their journey through **VESPA**.



Our House System

The house system dates back to our humble beginnings and it did much in those early years to encourage students to progress. New students would join a house rather than a tutor group and they would have a house master or mistress to guide them through their education from the day they started until the day they left school. All games and academic endeavours were celebrated as house, not individual, achievements.

We continue to be passionate about our house system. The aim is to build teamwork, confidence and community through competition. Every student is a member of one of the houses and competes to earn points for their house. Students can earn points for achievements such as attendance, progress, sport, poetry, games etc. We want every student to develop the character, grit and determination to enable them to compete and experience what it feels like to be part of a successful team as well as getting first hand experiences of camaraderie and team spirit.

House competitions are held every week, usually Friday lunch time. The House Team has developed a series of events, with a focus upon mass participation. The events accommodate the whole school, Sixth Form included. They must be fun and competition based. The winning team gets 600 points for a win, and each contestant gets 5 points for entering. A register is taken at each event to enable the house team to manage participation and reward attendees. House events are vibrant and exciting. They are often fun and promote teamwork and competition.

Sparta

Troy


Rome

Carthage

Athens

Thebes





3D Product Design
Art & Design
Biology
Business
Chemistry
Computer Science
Drama & Theatre Studies
Economics
English Language
English Literature
Geography
History
Law
Mathematics
Media Studies
Modern Foreign Languages
Physical Education
Physics
Politics
Psychology
Religious Studies
Sociology



Wath
Academy
Sixth Form

A-LEVEL

Qualifications

A-LEVEL - Qualifications



**'DIFFERENT' AND 'NEW' IS
RELATIVELY EASY. DOING
SOMETHING THAT'S
GENUINELY BETTER
IS VERY HARD.**

Sir Jonathan Paul Ive, KBE, HonFREng, RDI
Apple Chief Designer



3D Product Design

This creative and thought-provoking qualification gives you the practical skills and confidence to succeed in a number of design based careers, especially those in the creative industries.

You will investigate historical, social, cultural and environmental influences on product design whilst enjoying opportunities to put your learning in to practice by producing products of your choice. You will gain a real understanding of what it means to be a designer, alongside the knowledge and skills sought by higher education and employers.

Subject content

The course will comprise of an in-depth investigation, designing and making of a product of your choice, this will form the Non Examined Assessment (NEA). In the February of Year 13, you will choose a topic and form a mini project for the externally set exam. As a student of 3D Design you will be introduced to a variety of experiences that explore a range of three-dimensional media, processes and techniques. Working with both traditional and new manufacturing techniques. A variety of methods and media will be used, including computer aided design to produce models and final outcomes. You may use sketchbooks/workbooks/journals to underpin your work, where appropriate. The exploration of relevant images, artefacts and resources that relate to a range of art, craft and design, from both the past and from recent times, including European and non-European examples, will be integral to the designing and making process. You will respond to these examples through practical

and critical activities that demonstrate your understanding of different styles, genres and traditions.

You will be required to demonstrate a number of different skills.

Learning methods

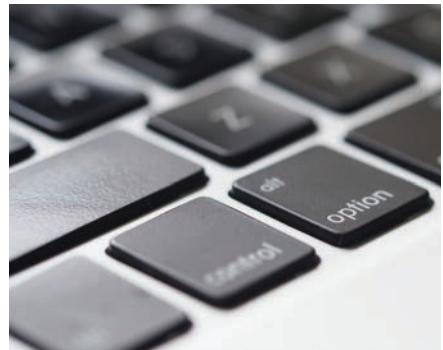
You will learn through lectures, independent research and investigation, designing and practical tasks.

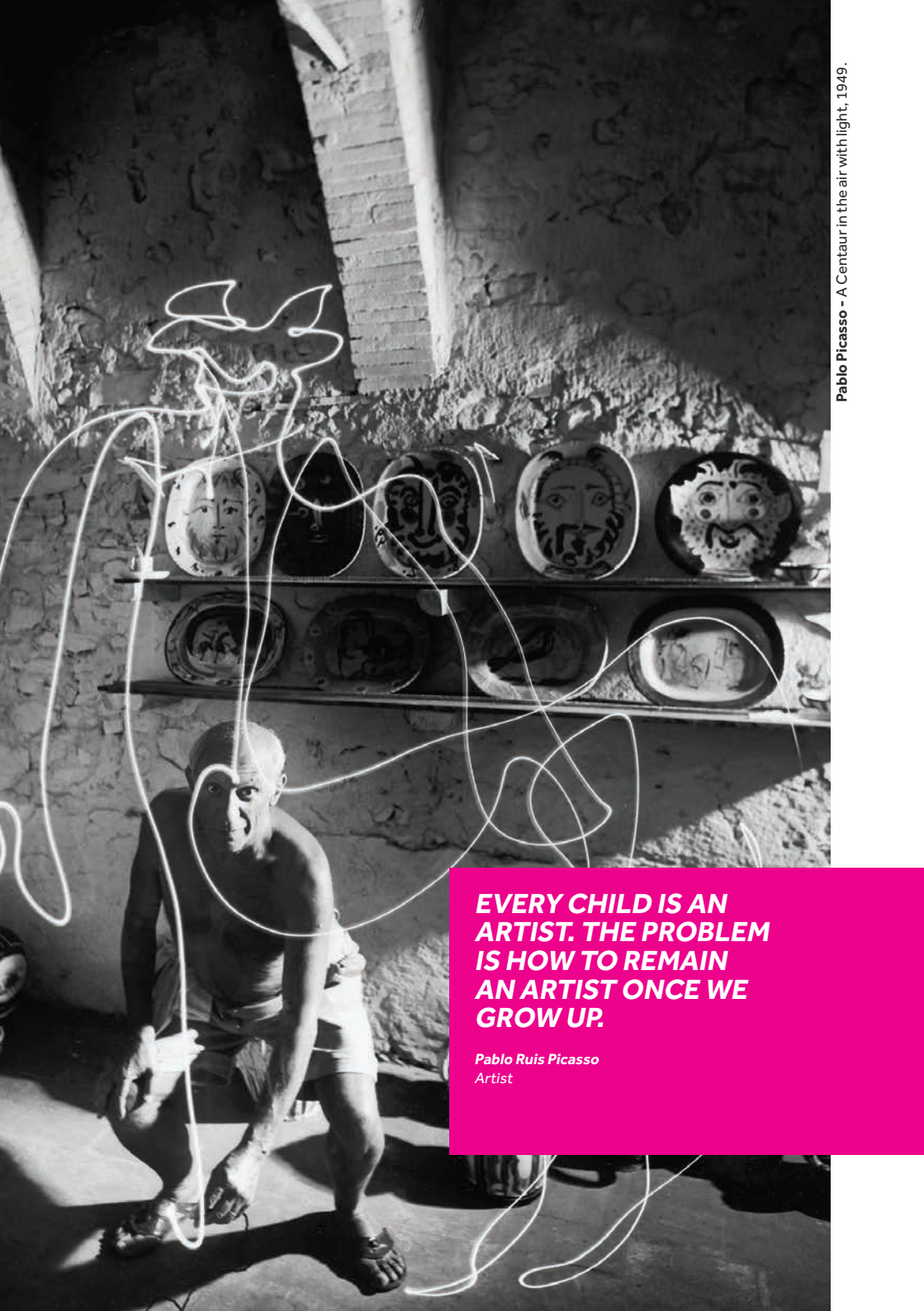
Assessment

Assessment is 60% NEA and 40% Examination.

Future opportunities

An A-level in Art & Design 3D - Product Design will be a stepping stone to the vast and varied world of design. The career opportunities are endless, students go on to study architecture, graphics, engineering, fashion, automotive design, theatre design, and the many facets of product design.





Pablo Picasso - A Centaur in the air with light, 1949.

**EVERY CHILD IS AN
ARTIST. THE PROBLEM
IS HOW TO REMAIN
AN ARTIST ONCE WE
GROW UP.**

Pablo Ruiz Picasso
Artist



Art & Design

The creative industry is one of the fastest growing industries in the UK making it worth £100 billion generating around £10 million per hour. More and more companies are looking for creative employees to reinvent or change their image to a constantly demanding consumer market. The Art and Design A-level course gives students an opportunity to explore and refine their creative skills and create a professional portfolio of work in the process. Unlike other subjects areas, art students have the luxury of compiling a portfolio of their best work that can be used for university interviews or job interviews within the creative sector. We are specifically looking for students who are creative, independent, ambitious, dedicated and passionate about creating exciting artwork.

Subject content

In your first year you will commence working your personal investigation that closely examines the work of other artists, but shows a clear development in your own personal style. The primary focus is to discover your skills and strengths through a variety of workshops and by studying the work of other practitioners. Your body of work will include in-depth development and exploration of ideas, though different medias and techniques before realising your intentions in a final piece. The personal investigation will be brought to a conclusion by January of your second year, with a supporting essay explaining the ideas concepts and artists behind your project. From February, of your second year onwards, you will begin your exam. This will be an external set of questions set by the exam

board, similar to GCSE, you will choose one question as a starting point and develop a body of work accordingly before starting your final piece. You will be given 15 hours to complete your final piece in exam conditions.

Additional entry requirements

Minimum grade 5 in GCSE Art (if previously studied). Students may be considered if their portfolio shows potential and you may be asked to complete an independent drawing exercise.

Learning methods

You will develop your art skills through specialist workshops, independent research and practical work in class or at home.

Assessment

Assessment is 50% coursework and 50% exam.

Future opportunities

Art is a versatile A-level choice and can support other options depending on your future career plans. Higher Education courses include fine art, graphic design, illustration, fashion design, textiles, computer games design, animation, architecture, landscape architecture, product design, ceramics, photography, creative writing, jewellery and metal work, film and media, art and design teaching, set design, performing arts and art history.



**ALTHOUGH NATURE
NEEDS THOUSANDS OR
MILLIONS OF YEARS TO
CREATE A NEW SPECIES,
MAN NEEDS ONLY A FEW
DOZEN YEARS TO
DESTROY ONE.**

Victor Scheffer, 1906 - 2011
Biologist



Biology

Biology is the study of the structure and function of living organisms. In teaching Biology we hope to encourage enthusiasm for the subject alongside an appropriate and relevant foundation of knowledge and skills. As well as studying the principles of Biology, students will learn the way in which scientists work and their contribution to society.

Subject content

During the course you will cover a wide range of biological concepts including:

Biochemistry:

Molecules essential to life, their structure, their formation and their function. Processes; the biochemistry of the Calvin cycle in photosynthesis and the Krebs' cycle in respiration.

Cell Biology:

The structure of cells, organelles and their function. The process of cell division, specialisation, organisation and cancer.

Exchange & Transport:

The importance of exchange surfaces and how they vary. The methods of transport and factors affecting them.

Genes & DNA:

The structure of DNA and process of replication. Transcription and translation of DNA to form proteins. The importance of gene technology, advancements in genome mapping and the control of gene expression.

Populations & Biodiversity:

The importance of biodiversity, the impact of humans and classification of animals. Demonstrating evolutionary links and the process of evolution. Investigating populations and ecology.

Communication & Control:

The communication of the nervous system, the hormonal control and bio regulation.

Practical Endorsement:

12 compulsory practicals in which you must demonstrate competency in various skills. These are linked to many biological concepts throughout the course.

Additional entry requirements

Minimum of 2 grade 6s in Combined GCSE Science or all three separate GCSE Sciences. Minimum grade 6 in GCSE Maths.

Learning methods

You will learn through a variety of methods, including teacher led, research, practical activities, group tasks and independent study.

Assessment

Assessment is by written examination. There is also a practical endorsement that will be completed and tracked throughout the course.

Future opportunities

Biology is a versatile course as it demonstrates the ability to learn and retain knowledge and how to apply knowledge to unfamiliar situations. The practical endorsement shows evidence of scientific investigative skills, analytical skills and the ability to use knowledge and data to support conclusions. All of these skills are transferable to many areas of higher education, making Biology a valuable A-level.



Steve Jobs - Apple Founder



**YOUR TIME IS LIMITED,
SO DON'T WASTE IT
LIVING SOMEONE
ELSE'S LIFE.**

Steve Jobs
Apple Founder



Business

This is a dynamic and relevant subject for those interested in the world of business and the environment in which businesses operate. You will explore a variety of business aspects such as marketing, human resources, operational and financial performance and how these play a supporting role in the direction of the business as a whole. You will apply theoretical concepts to real business examples to make you more aware of the business arena.

Subject content

In the first year of the course a solid foundation is provided to ensure you are equipped to progress to year two. You will investigate a range of businesses and how they are formed. You will develop an understanding of the role of managers and leaders and of how decisions are made in a business. The main focus will be on the functional areas of a business and how their decisions can drive business success. You will also undertake research into actual companies so that you can apply your learning to the real world of business today.

The second year topics are a natural progression from year one and involve more complex business scenarios. You will look at businesses from a more strategic perspective and are expected to be evaluative about how companies should operate. In particular, you will focus on a business, analysing its strategic position, choosing a strategic direction, considering how to pursue its strategy and then ensuring the ability to manage the strategic change.

Learning methods

You will learn through lectures, research projects, group work and presentations.

Assessment

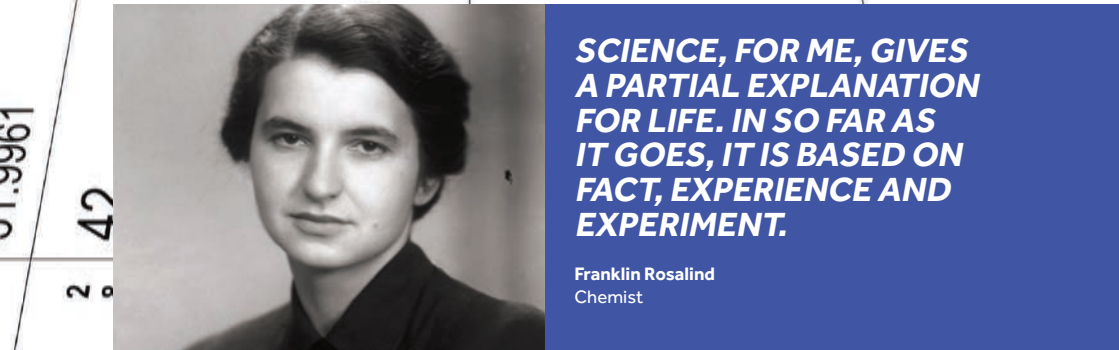
Assessment will be through examinations taken at the end of the second year, although internal assessments will run throughout the two years.

Future opportunities

A-level Business allows you to pursue a variety of routes. You could progress on to a BA Hons degree in Business and Management, Accounting and Finance, Marketing, Human Resource Management or Teaching. Higher and degree level apprenticeships are also available. Following this you could enter employment in a variety of roles, for example, in a graduate training programme, as a Trainee Manager or in a senior administrative role.



43 Ni Nickel 58.6934	44 Co Cobalt 58.933195	45 Rh Rhodium 102.9055	46 Pd Palladium 106.42	47 Ag Silver 107.8682	48 Cd Cadmium 112.411	49 In Indium 114.818	50 Sn Tin 118.710	51 Sb Antimony 121.757	52 Te Tellurium 127.603	53 I Iodine 126.905	54 Xe Xenon 131.29	55 Ba Barium 137.327	56 La Lanthanum 138.905	57 Ce Cerium 140.12	58 Pr Praseodymium 140.908	59 Nd Neodymium 144.242	60 Pm Promethium 144.913	61 Sm Samarium 150.36	62 Eu Europium 151.964	63 Gd Gadolinium 157.25	64 Tb Terbium 158.925	65 Dy Dysprosium 162.50	66 Ho Holmium 164.930	67 Er Erbium 167.259	68 Tm Thulium 168.934	69 Yb Ytterbium 173.054	70 Lu Lutetium 174.967	71 Hf Hafnium 178.49	72 Ta Tantalum 180.948	73 W Tungsten 183.84	74 Re Rhenium 186.207	75 Os Osmium 190.23	76 Ir Iridium 192.222	77 Pt Platinum 195.084	78 Au Gold 196.967	79 Hg Mercury 200.59	80 Tl Thallium 204.387	81 Pb Lead 207.2	82 Bi Bismuth 208.980	83 Po Polonium 209	84 At Astatine 210	85 Rn Radon 222	86 Fr Francium 223	87 Ra Radium 226	88 Ac Actinium 227	89 Th Thorium 232.038	90 Pa Protactinium 231.036	91 U Uranium 238.029	92 Np Neptunium 237.048	93 Pu Plutonium 244.064	94 Am Americium 243.061	95 Cm Curium 247.065	96 Bk Berkelium 247.067	97 Cf Californium 251.083	98 Es Einsteinium 252.083	99 Fm Fermium 257.105	100 Md Mendelevium 258.106	101 No Nobelium 259.108	102 Lr Lawrencium 260.109	103 Rg Roentgenium 272.103	104 Ds Darmstadtium 281.103	105 Mt Meitnerium 288.103	106 Nh Nihonium 289.103	107 Fl Flerovium 289.103	108 Lv Livermorium 293.103	109 Ts Tennessine 294.103	110 Og Oganesson 294.103
-------------------------------	---------------------------------	---------------------------------	---------------------------------	--------------------------------	--------------------------------	-------------------------------	----------------------------	---------------------------------	----------------------------------	------------------------------	-----------------------------	-------------------------------	----------------------------------	------------------------------	-------------------------------------	----------------------------------	-----------------------------------	--------------------------------	---------------------------------	----------------------------------	--------------------------------	----------------------------------	--------------------------------	-------------------------------	--------------------------------	----------------------------------	---------------------------------	-------------------------------	---------------------------------	-------------------------------	--------------------------------	------------------------------	--------------------------------	---------------------------------	-----------------------------	-------------------------------	---------------------------------	---------------------------	--------------------------------	-----------------------------	-----------------------------	--------------------------	-----------------------------	---------------------------	-----------------------------	--------------------------------	-------------------------------------	-------------------------------	----------------------------------	----------------------------------	----------------------------------	-------------------------------	----------------------------------	------------------------------------	------------------------------------	--------------------------------	-------------------------------------	----------------------------------	------------------------------------	-------------------------------------	--------------------------------------	------------------------------------	----------------------------------	-----------------------------------	-------------------------------------	------------------------------------	-----------------------------------



SCIENCE, FOR ME, GIVES A PARTIAL EXPLANATION FOR LIFE. IN SO FAR AS IT GOES, IT IS BASED ON FACT, EXPERIENCE AND EXPERIMENT.

Franklin Rosalind
Chemist

Nb
Niobium
92.9063

Ta
Tantalum
180.94788



Chemistry

Chemistry students study how atoms link together to form larger structures such as molecules, and the mechanisms by which molecules can be reshaped and adapted. This subject occupies a central position between physics, mathematics and engineering on the one hand, and biology, earth science and medicine on the other.

Subject content

Throughout the course you will cover topics from the three different branches of chemistry:

Physical Chemistry is the study of how matter behaves on a molecular and atomic level and how chemical reactions occur. Based on their analyses, physical chemists may develop new theories, such as how complex structures are formed. You will study topics such as; atomic structure, thermodynamics, kinetics, equilibria and electrochemical cells.

Organic Chemistry focuses on the structure, properties and applications of various carbon-containing molecules that make up important biological molecules such as proteins, enzymes, carbohydrates, lipids, nucleic acids, and vitamins.

Inorganic Chemistry is concerned with the properties and behaviour of inorganic compounds, which include metals, minerals, and organometallic compounds. Inorganic compounds are generally those that are not biological. During the course you will study topics such as; Periodicity, Group 2, the alkaline earth metals, Group 7, the halogens, transition metals and reactions of ions in aqueous solution.

Additional entry requirements

Minimum of 2 grade 6s in Combined GCSE Science or all three separate GCSE Sciences.

Minimum grade 6 in GCSE Maths.

Learning methods

A variety of teaching approaches will be deployed during the course and will consist of independent study and research, tutor led lessons and practical investigations.

Assessment

Assessment will take the form of written examinations, at the end of the two years of study. A separate endorsement of practical skills will be taken alongside the A-level. This will be assessed by teachers and will be based on direct observation of students.

Future opportunities

Chemistry helps us to understand the world in which we live and underpins a wide range of science-based degree courses and careers. Success with A-level Chemistry will prepare you for a future in pharmacy, pharmacology, chemical engineering, biochemistry, medicine and dentistry.





THE ORIGINAL IDEA OF THE WEB WAS THAT IT SHOULD BE A COLLABORATIVE SPACE WHERE YOU CAN COMMUNICATE THROUGH SHARING INFORMATION.

Sir Timothy John Berners-Lee
Inventor of the World Wide Web



Computer Science

Technology is all around us and instead of just absorbing this technology you question it. You have a deeper interest and want to find out more about the underlying fundamentals behind it. What is it made up of? How does it work? Who made it? Why was it made? You wish to learn about the physical components and also the software which controls it allowing it to work as a whole. You want to take things apart and see 'what's in the box' and also learn how to program code yourself. You may also wish to explore other avenues such as the moral, cultural and ethical implications that this technology has globally.

Subject content

You will gain a 'hands on' understanding of computer components and how they work before being taught how to efficiently use a programming language allowing you to independently complete a programming project to resolve a problem. As you complete the programming task you are expected to evidence all the steps taken on this journey, showing task analysis, design, development and eventual evaluation of your project. In preparation for the two external examinations you will learn about topics such as the characteristics of contemporary processors, input, output and storage devices, software, data, algorithms, global issues, computational thinking and problem solving and programming.

Additional entry requirements

We require a minimum grade 6 in GCSE Maths and also Computer Science if previously studied.

Learning methods

You will learn through teacher led lessons (both practical and theory) and independent research.

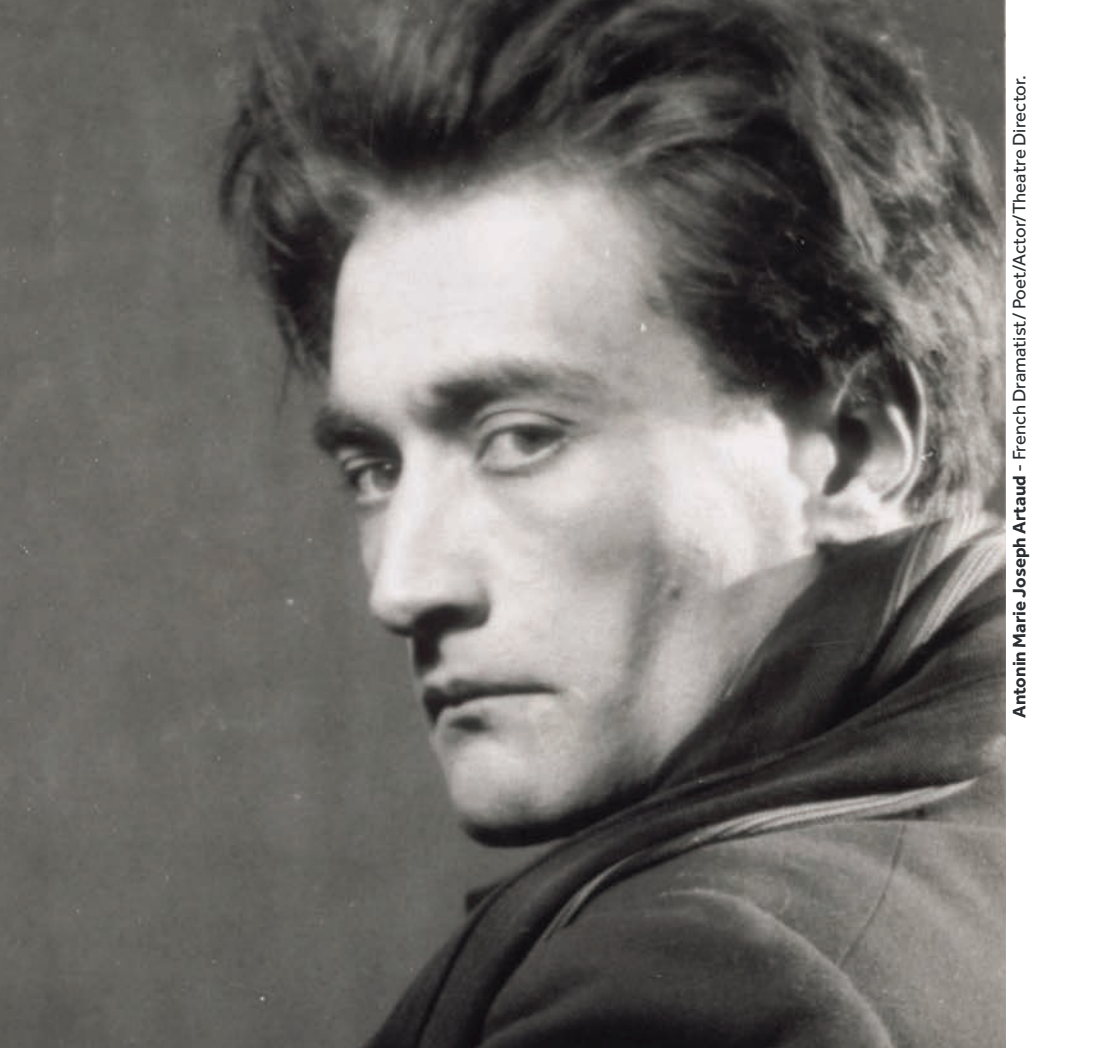
Assessment

The final grade is calculated based upon two external examinations of which each is worth 40% of the course and a programming project which makes up the final 20%.

Future opportunities

Computer Science is a very highly regarded qualification that opens the door to many future opportunities. Potential roles include a software/games developer, database administrator, computer hardware engineer, computer systems analyst, web developer, information security analyst, computer and information research scientist, systems manager, IT project manager and many more.





Antonin Marie Joseph Artaud - French Dramatist / Poet/Actor/Theatre Director.



**WHEN THE LEADERS
SPEAK OF PEACE, THE
COMMON FOLK KNOW
WAR IS COMING.**

Bertold Brecht
Director/Playwright/Poet



Drama & Theatre Studies

This course is for those who have a background in drama or performing arts, either through the examinations they have already taken, or from an interest they have pursued in their own time. We are looking for those who are prepared to commit themselves to working closely with a group and in developing their own particular skills and understanding of drama and theatre. We follow the Eduqas specification which, gives a good balance between the academic rigour required to follow the subject further into Higher Education, whilst allowing each student the freedom to develop their own skills as an actor.

Subject content

You will study a range of dramatic practitioners and use this knowledge to interpret and perform at least 3 set texts and devise your own drama. The main focus is on Stanislavski, Brecht, Artaud and Berkoff. This two year course allows you to study a post and pre-1956 set text, considering characters, rehearsal techniques, technical and design elements that leads to an exam at the end of the course. Although this is a written exam the techniques for studying both plays are very practical. You will study a number of other set texts as starting points for creating your own piece of drama and evidence your progress of this through a creative log. You will have the opportunity to perform a published script in the style of a practitioner and then devise your own piece of drama from a stimulus, set by the board, in a contrasting style to an audience.

Additional entry requirements

You are reminded that this is a course in which you will be expected to perform to a range of

audiences. There is a requirement to engage in extra rehearsals after school and in a host of extra-curricular performances.

Learning methods

You will learn through group work, lectures, practical work, workshops, theatre visits and research projects.

Assessment

Assessment is by written examination, creative log, course work and performance examination.

Future opportunities

Drama is a course that will prepare you for Higher Education opportunities in any performance or media subject. It also supplies you with a whole range of transferable skills such as confidence, public speaking, time management, empathy, the ability to work as part of a team, presentation and decision making, all of which universities and employers highly value.





Andrea Leadsom MP @andrealeadsom

I don't think the UK should leave the EU. I think it would be a disaster for our economy and it would lead to a decade of economic and political uncertainty

23 Apr 2013

she didn't have it, she actually said it! if the Hansard Society. What changed? #LedByDonkeys @ByDonkeys

I BELIEVE IT IS CLEARLY IN OUR NATIONAL INTEREST TO REMAIN A MEMBER OF THE EUROPEAN UNION

*Theresa May
Prime Minister (2016-2019)*





Economics

In this subject you will look at the fundamental forces which affect our lives, such as employment, prices, international trade and poverty. Economists are often in healthy debate with each other over these issues. It is this controversy which makes Economics lively, interesting and relevant and which allows you the opportunity to make your own judgements and form your own opinions.

Subject content

In the first year you will gain knowledge of both Microeconomics and Macroeconomics. Microeconomics will investigate demand and supply, the operation of the price mechanism and causes of market failure. Within the Macroeconomics element of the course, you will investigate developments in the UK economy and Government policies over the past fifteen years. You will also develop an initial understanding of how external events in the international economy – including Brexit – will affect the performance of the United Kingdom and vice versa. Within both aspects of Economics you will build knowledge of economic models and be able to apply these to current problems and issues as well as knowing their limitations when making sense of real world phenomena.

The second year builds on the knowledge gained from the first year with regards to Macroeconomics and Microeconomics as more detailed study is completed. Topics include the labour market, income distribution and poverty, financial markets and the international economy. As well as strengthening your ability to analyse economic issues and evaluate policy options, you will develop the skill of using data to make

and justify your own economic decisions.

Additional entry requirements

Minimum grade 6 in GCSE Maths.

Learning methods

You will learn through lectures, research projects, group work and presentations. Visits are also arranged.

Assessment

Assessment will be by examinations at the end of the two years of study. Throughout the two years of study there will be internal assessments.

Future opportunities

Economics is a challenging but highly regarded subject and is an excellent subject to study if you are looking to apply to a Russell Group university. This course is also suitable for a wide range of careers: working as an economist, in banking, accountancy or any business related career.





***I HAVE A HORRIBLE FEELING
I AM A GREEDY, PERVERTED,
SELFISH, APATHETIC, CYNICAL,
DEPRAVED, MORALLY BANKRUPT
WOMAN WHO CAN'T EVEN CALL
HERSELF A FEMINIST.***

Phoebe Waller-Bridge
Quote from Fleabag



English Language

The course explores the study of English language both as a medium of communication and as a topic in its own right, with an emphasis on developing your ability to pursue lines of enquiry, analyse texts produced by others and debate different views.

Subject content

The methods of analysis appropriate to the fields of English language/linguistics underpin all the elements of this course, and these are applied to distinctive topic areas.

The aim of 'Language, the Individual and Society' is to introduce you to language study, exploring textual variety. This area of study introduces you to methods of language analysis to explore concepts of audience, purpose, genre, mode and representation. It also introduces you to the study of children's language development, exploring how children learn language and how they are able to understand and express themselves through language.

The aim of 'Language Diversity and Change' is to allow you to explore the diversity of language. You will explore language in its wider social and geographical contexts in studying the impact of sociolects, gender and occupation. You will study varieties of English within the British Isles, and you will explore processes of language change.

Additional entry requirements

Minimum grade 5 in GCSE English Language.

Learning methods

We take an interactive and collaborative approach towards our studies in English Language. You will learn through a process of discussions, group and paired work, independent work and lectures.

Assessment

By examination and coursework at the end of the two years of study. Throughout the two years of study there will be internal assessments.

Future opportunities

English Language is a versatile A-level choice and is highly regarded by Higher Education establishments. With an English Language A-level you have the expertise to help you in the following fields: marketing, journalism and media, medicine, law, social work, accountancy, management consultancy, English teaching, primary teaching, teaching abroad, the police force, the music/fashion industry, television and film industry, politics and many more!





Artist Stanley Donwood - JG Ballard's, High Rise Cover Artwork



***IN A TOTALLY SANE
SOCIETY, MADNESS
IS THE ONLY
FREEDOM.***

JG Ballard (1930-2009)
Novelist





English Literature

The course aims to encourage you to develop your interest and enjoyment of literature. You will have the opportunity to read widely and independently, both set texts and others that you have selected for yourself. You will engage creatively with texts and develop how to critically and effectively apply your knowledge of literary analysis and evaluation, whilst exploring the contexts of the texts and others' interpretations.

Subject content

You will study pre and post-1900 prose, poetry and drama from across the English literary canon. You will be further challenged with studying the approaches to unseen texts and coursework opportunity in the form of a wider reading essay with plenty of scope for you to shape your own area of focus and study. The range of reading on offer will give you the opportunity to explore ways in which writers use and adapt language, form and structure in texts, and you will develop your ability to synthesise a range of interpretations by different readers and critics. You will learn how texts relate to one another and to broader literary traditions, movements and genres, and you will discover the cultural and contextual influences on readers and writers.

Additional entry requirements

Minimum grade 6 in GCSE English Literature and a minimum grade 5 in GCSE English Language.

Learning methods

We take an interactive, collaborative and challenging approach towards our studies in English Literature. You will learn through a process of discussion, group and paired work, independent work and lectures.

Assessment

By examination and coursework at the end of the two years of study. Throughout the two years of study, there will be internal assessments that link to the final examinations.

Future opportunities

English Literature is a facilitating subject for Russell Group universities. With an English Literature A-level you have the expertise to succeed a huge range of fields, including writing, publishing, journalism and media, marketing, medicine, law, social work, accountancy, teaching, television and film industry, and politics.





**YOU SAY YOU LOVE
YOUR CHILDREN ABOVE
ALL ELSE AND YET YOU
ARE STEALING THEIR
FUTURE IN FRONT OF
THEIR VERY EYES.**

Greta Thunberg (16 years)
Climate Change Activist





Geography

Geography at A-level builds on the foundations of Geography at GCSE to challenge perceptions and stimulate investigative and analytical skills. The units of traditional Geography are joined by new contemporary topics that reflect the world around us today. The course will contribute to the knowledge, skills and enthusiasm sought by higher education and employers.

Subject content

You will study aspects of both physical and human geography. Topics covered are Hazards, Coastal Systems and Landscapes, Water and Carbon Cycles, Changing Places, Contemporary Urban Environments and Global Systems and Global Governance. The course includes a compulsory 5-day residential visit to Blencathra. This forms part of the data collection for the independent investigation.

Additional entry requirements

Minimum grade 5 in GCSE Geography (if previously studied).

Learning methods

You will learn in a variety of different ways including group work, independent research, geographical questions, class discussion and video clips.

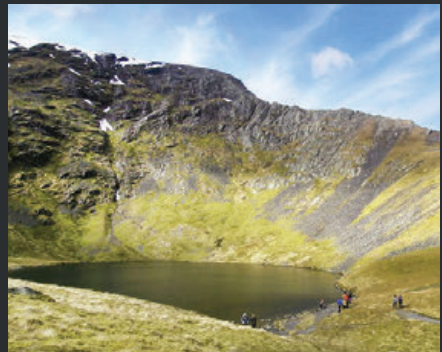
Students will be allocated a coursework mentor during Year 13. Students will meet with their mentor to receive support and guidance with their independent study.

Assessment

At A-level there are two 2 hour 30 minute exams worth 40% each and an individual geographical investigation project worth 20% of the qualification.

Future opportunities

Geography is a very versatile A-level choice combining well with science or humanities subjects. It is highly regarded by Higher Education establishments and is one of the facilitating subjects Russell Group universities recommend you to study to leave a wide range of doors open for Higher Education. Graduates go on to have a wide range of careers in a number of different sectors including environmental management, international development, area government, business and education.



Blencathra, Lake District.



Battle of Spotsylvania - Thure de Thulstrup (1848-1950)



**MANKIND MUST
PUT AN END TO
WAR BEFORE WAR
PUTS AN END TO
MANKIND.**

John F. Kennedy (1917-1963)
35th U.S. President (1961-1963)



History

Want to know why the USA is one of the most powerful countries in the world? Interested in how court gossip contributed to the crisis of the French crown? Fascinated by the debate surrounding Margaret Thatcher and her impact on the local area? Then History is the A-level for you!

Subject content

The course comprises of three separate elements, chosen to give variety both geographically and across time periods. The breadth study focuses on the birth of the American nation, from the Civil War to its development into a Superpower. The depth study examines Britain between 1951 and 2007, looking at the extent of political, economic and social change. The final part of the course will ask students to consider the complexity of causation and ultimately ask them to reach a decision as to why the French executed their King in 1792.

Additional entry requirements

Minimum grade 5 in GCSE History (if previously studied).

Learning methods

A variety of learning methods are used to prepare you for further study and the demands of the work place. These include: collaborative learning, lectures, reading, seminar discussions and presentations. These methods allow you to develop the critical, communication and debate skills that the most successful historians possess. In addition, the department aims to bring the History course to life through visiting historical sites, where applicable.

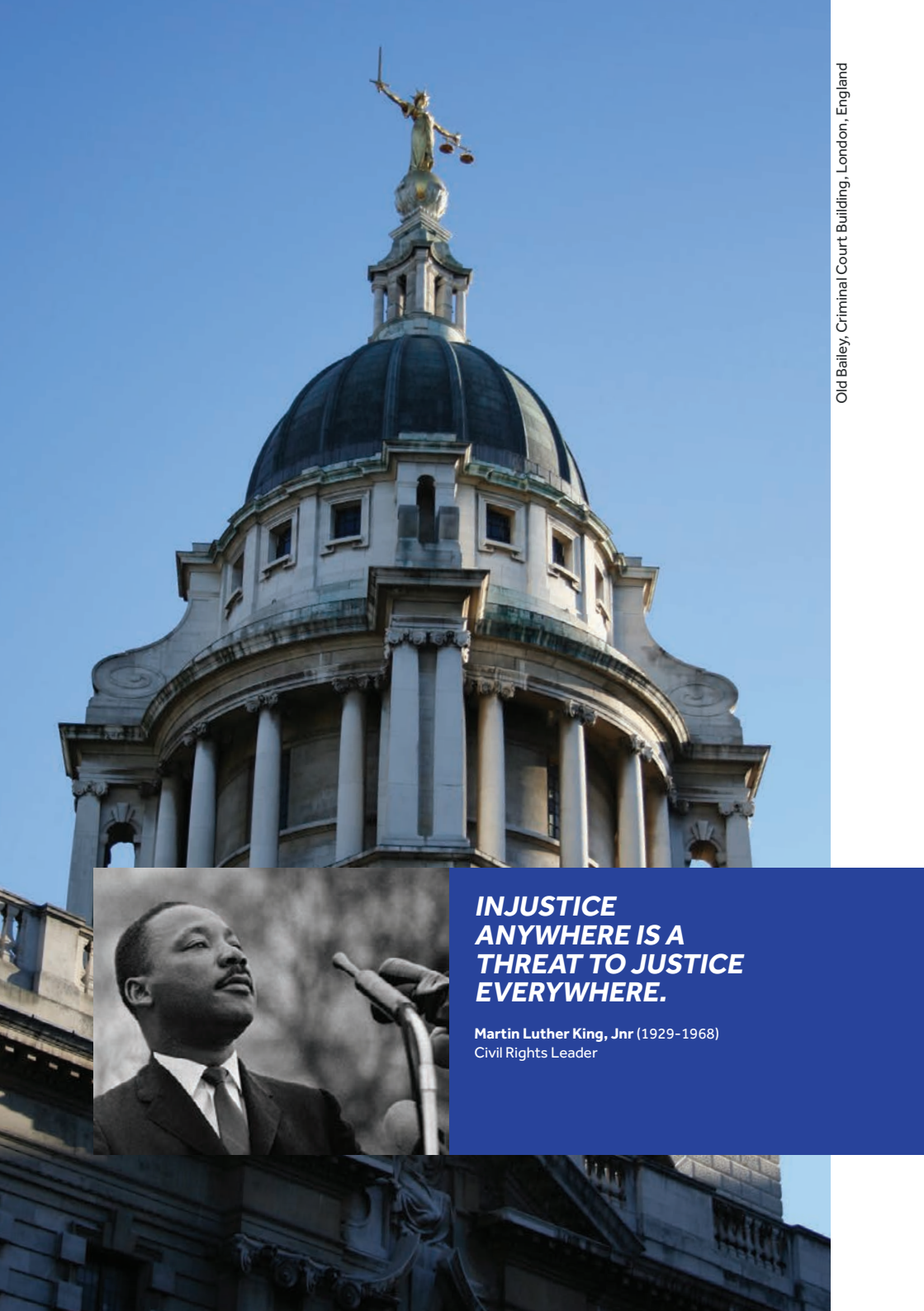
Assessment

A-level History is examined through 2 examination papers of 2 hour and 30 minutes containing either source or interpretation style questions, as well as traditional essays. In addition, students will complete a personal study of approximately 3500 words.

Future opportunities

History is held in very high esteem by both employees and universities for being a rigorous subject which requires its students to think and argue. That is why History students can be found in careers as diverse as law, journalism and accountancy. The Russell Group of leading universities values History as a facilitating subject, usually these universities require two facilitating subjects for entry to their courses.





***INJUSTICE
ANYWHERE IS A
THREAT TO JUSTICE
EVERYWHERE.***

Martin Luther King, Jr (1929-1968)
Civil Rights Leader



Law

Law plays a vital role in society. It provides a means to recognise rights and duties, solve problems and resolve disputes without resorting to violence. A-level Law encourages you to develop the skills necessary to analyse and solve problems by applying rules and to develop the ability to communicate arguments and conclusions clearly and concise. It will help you validate arguments and develop an enquiring and critical mind.

Subject content

During the course you will cover the following:

The Nature of Law and the English Legal System:

The differences between criminal and civil law, the meaning and importance of fault, the relationship between law and morality, Parliamentary law making, judges interpreting this law, judge-made law, the criminal and civil courts, magistrates and juries, etc.

Criminal Law:

The general principles of criminal law, fatal and non-fatal offences against the person, property offences and various defences such as intoxication, insanity, self-defence, etc.

Tort:

Theory of Tort Law, liability in negligence, occupiers' liability, nuisance and the escape of dangerous things, defences, remedies, etc.

Contract:

Rules on formation of contract, consumer rights, exclusion clauses, breach of contract, damages, etc.

Additional entry requirements

We require a minimum grade 6 in English Language or English Literature.

Learning methods

You will learn through a variety of methods including teacher led, research projects, group tasks and independent study.

Assessment

There will be regular tests and exam question practice. Assessment is by examination.

Future opportunities

Law provides an excellent background for university and careers not only in law, but also in journalism, local and central government, public relations, teaching, and a range of management and business areas.





**YOU TELL ME WHEN YOU
WANT IT AND WHERE YOU
WANT IT TO LAND, AND
I'LL DO IT BACKWARDS
AND TELL YOU WHEN TO
TAKE OFF.**

Katherine Johnson (Aged 101)
American Mathematician - Orbital Mechanics, NASA



Mathematics

Mathematics aims to develop the students' understanding of mathematical processes in a way that promotes confidence and fosters enjoyment. It aims to extend their range of skills and use them in more difficult, unstructured problems.

Subject content

In A-level Mathematics you will study for papers in Pure Mathematics, Statistics and Mechanics.

Pure Mathematics

Will include topics on proof, algebra and functions, coordinate geometry, sequences and series, trigonometry, exponentials and logarithms, differentiation, integration, vectors and numerical methods.

Statistics

Will include topics on statistical sampling, data presentation and interpretation, probability, statistical distributions and hypothesis testing

Mechanics

Will include topics on quantities and units in mechanics, kinematics, forces and Newton's laws and moments.

Additional entry requirements

It is essential that students have achieved a minimum grade 7 in GCSE Maths.

Learning methods

You will learn through direct teaching, discussion, independent work and group work.

Assessment

Assessment is by 3 written examinations at the end of Year 13. Two of these focus on the Pure Mathematics content and the third one both Statistics and Mechanics. All questions must be answered and calculators are permitted in all 3 examinations.

Future opportunities

Mathematics is a versatile A-level choice and is highly regarded by Higher Education establishments. Mathematics is a key component of many degree courses, including computer science, engineering, natural sciences, economics, medicine, geography, architecture and of course, mathematics itself. Graduates go on to have a wide range of careers in any job where logical thought and problem solving are required such as business, accountancy or computing.





Fake news is often published on legitimate-looking websites

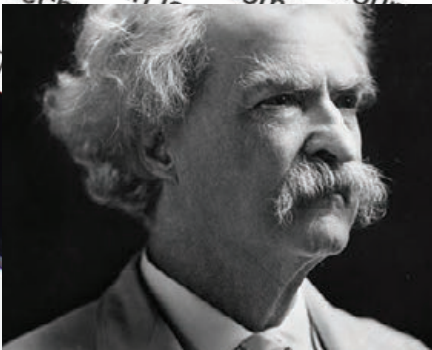
Fake news: BBC and tech firms join forces to fight disinformation

7 hours ago | *Technology*

Plans to help tackle so-called "fake news" have been announced by the BBC and some of the world's leading tech names in a joint effort to combat disinformation.

NEVER LET THE TRUTH GET IN THE WAY OF A GOOD STORY.

Mark Twain (1835 - 1910)
American Writer





Media Studies

You have already engaged with many different forms of media today – be it listening to music, watching TV or communicating online. If you want to explore why, take A-level Media Studies. You will need strong analytical skills and good essay writing abilities to succeed at this subject. You will also need some creative skills, but this is primarily an academic course.

Subject content

The four key components of Media Studies are analysing media products, considering how the media represents the world around us, investigating how audiences respond to media products and discovering the industry behind the media.

Areas of study include television, film, radio, music, online media, videogames, newspapers, magazines and advertising/marketing. To cover these, we analyse, in-depth, a number of products from each media form (for example, an episode of a television drama, a particular music video, a specific website etc.). While many of these will be mainstream, others will be less familiar, such as historical or foreign products.

Practical work, which makes up the non-examination assessment, forms a minority of the course. Here, you make your own audio-visual and/or print-based productions, with plenty of support in lessons.

Additional entry requirements

Minimum grade 5 in GCSE English Language and/or GCSE English Literature. There is no requirement to have taken Media Studies before.

Learning methods

You will learn through class discussions, group work, presentations, independent research, screenings and by completing practical work.

Assessment

Assessment is 70% examination and 30% non-examination assessment (coursework).

Future opportunities

Most students of A-level Media Studies go on to university, undertaking a variety of degrees. The analytical skills enhanced by Media Studies are useful for courses such as English, business, communications or the humanities; the practical skills developed can help in courses such as film, art, design or photography. Many careers - such as journalism, marketing, filmmaking, broadcasting, graphic design and public relations - have links to Media Studies.





La Tomatina, Buñol, Spain.

**IN ANY REGION OF
ANY COUNTRY OF ANY
CONTINENT, THERE ARE
ALWAYS GREAT STORIES
THAT MOVE US.**

Javier Bardem
Academy Award winning Spanish Actor.



Modern Foreign Languages

You will immerse yourself in the culture and traditions of other countries, opening your eyes to opportunities beyond South Yorkshire. You will develop skills such as confidence, spontaneity, adaptability, resourcefulness and tenacity. You will also learn to embrace challenge! You will better understand not only words, but people, appreciating how identity affects behaviours, developing mutual respect. In short, the ability to speak and understand other languages will open up a whole new world to you. "You don't just learn a language, you fall in love with it".

Subject content

You will study a variety of themes including media and technology, traditional and modern aspects of life, immigration and youth culture. You will have the opportunity to study a range of films, produced in a variety of different eras and contexts. You will read novels in the target language to develop an appreciation of the sophistication of the language and to also understand them within their cultural and social context.

Additional entry requirements

Minimum grade 7 in the language you wish to study.

Learning methods

You will learn through group work, lectures, practical work, research projects and film

screenings. You will have lessons with native speakers each week. Students have enjoyed trips and work experience visits to Riesa (Germany), Seville (Spain) and St. Etienne (France).

Assessment

Assessment is by examination. There are 3 examinations at the end of Y13:
Paper 1 – listening, reading and writing.
Paper 2: essay paper (film and novel)
Paper 3: speaking examination (independent research project)

Future opportunities

We are proud of the many students who go on to study languages further, often together with subjects such as international business and law. Some choose to work for international companies or teach English abroad. We have ex-Wath students all over the world!





**TO KEEP THE BODY
IN GOOD HEALTH IS A
DUTY... OTHERWISE WE
SHALL NOT BE ABLE TO
KEEP OUR MIND STRONG
AND CLEAR.**

Buddha



Physical Education

The content has been designed to allow you to study Physical Education and Sport in an academic setting, enabling you to evaluate and analyse physical performance and develop your knowledge and understanding of the subject. The specification has an increased emphasis on the scientific study of sport, to reflect the increasingly scientific approach to sport today.

Subject content

The A-level comprises of Anatomy and Exercise Physiology, including an examination of body systems (skeletal, cardiovascular, respiratory and energy systems), and Biomechanics.

You will develop theoretical knowledge of the scientific factors that underpin physical activity/sport, such as fitness and training. You will also study sport psychology and contemporary issues in sport, developing an understanding of the factors that influence people's involvement in physical activity and sport, and the role of technology in sport. Practically, you will develop skills/techniques, improve performance using tactics, strategies and/or compositional ideas, and develop your ability to analyse and evaluate to improve performance.

Additional entry requirements

Minimum of 2 grade 5s in GCSE Combined Science or all three separate GCSE Sciences. You must be actively participating in sport at a competitive level for a team other than a school one.

Learning methods

You will learn through both classroom and practical work including individual research and group work.

Assessment

Assessment is by externally assessed theory examinations (70%), and an externally moderated practical unit, which includes an oral examination and performance in one activity (30%).

Future opportunities

Students often go on to further study in sport related degrees. However, this qualification is suitable for learners intending to pursue any career for which an understanding of the human body or human behaviour is desirable. Avenues of progression for candidates include careers in: medicine, sport and physical activity, PE teaching, physiotherapy, personal trainer, sports coach, and careers in the services (RAF/Police).





**THE BRIGHT SUN WAS
EXTINGUISH'D, AND
THE STARS DID WANDER
DARKLING IN THE
ETERNAL SPACE.**

Lord Byron (George Gordon)
Poet



Physics

Why is the universe the way it is? Physics asks questions about the fundamental forces and interactions that shape our lives. It seeks to explain how nature behaves by understanding the mechanisms that explain natural phenomena.

Subject content

The course studies topics ranging from modern particle physics through classical mechanics and motion, electricity and magnetism, waves, fields and nuclear reactions.

Measurements and their Errors: Use in practical work and awareness of measurements and their uncertainties.

Particles and Radiation: Properties of matter, electromagnetic radiation and quantum phenomena, including sub-atomic particles, anti-particles and photons.

Waves: Characteristics, properties and applications of travelling waves and stationary waves, concepts of refraction, diffraction, superposition and interference.

Mechanics and Materials: How forces energy and momentum are related, along with bulk properties of materials.

Electricity: The nature of electricity. Simple circuits and applications of electricity are analysed.

Further Mechanics and Thermal Physics: Circular and simple harmonic motion, the thermal properties of materials and the properties and nature of ideal gases.

Fields and their Consequences: Gravitational and electromagnetic fields. Practical applications such as satellite orbits, capacitors in circuits and electromagnetic induction.

Nuclear Physics: The properties of atomic nuclei, energy and mass and the production of nuclear power.

Option: Astrophysics or turning points in physics.

Practical Endorsement: 12 practicals, in which you must demonstrate competency in various skills. These are linked to concepts throughout the course.

Additional entry requirements

Minimum of 2 grade 6s in Combined GCSE Science or all three separate GCSE sciences. Minimum grade 6 in GCSE Maths. The study of Maths beyond GCSE is strongly recommended and ideally compliments this course.

Learning methods

You will learn through a variety of methods, including teacher led, research, practical activities, group tasks and independent study.

Assessment

Assessment is by written examination. There is also a practical endorsement that will be completed and tracked throughout the course.

Future opportunities

Physics is excellent preparation for most Higher Education courses in a science or engineering subject. It is valued by employers that require good mathematical and analytical skills. Future career opportunities range from technicians through all branches of engineering to financial analysts. You will develop the skills, understanding and knowledge that employers across a wide spectrum of industries are looking for.



**NATIONALISATION
OF INDUSTRY IS THE
DOOM OF TRADE
UNIONISM.**

Winston Churchill
Prime Minister (1940-1945, 1951-1955)



Politics

One of the defining characteristics of the subject is that it is dynamic and contemporary. You will learn to understand the political system by studying developments as they happen. This sheds further light on the theory studied in class and gives a great sense of the importance of Politics. It is this unfolding narrative which helps to make the subject so interesting to the vast majority of students who study it. If you are interested in current affairs, such as Brexit, the UK General elections, and the rise of Donald Trump, then you will thoroughly enjoy the A-level Politics course.

Subject content

The course is divided into 3 equally weighted sections. The first section focuses on the British political system. Here you will learn about the various ways in which people can participate, how government is run and how laws are passed. You will start to understand how such processes work and then start to judge for yourself whether or not the UK is sufficiently democratic. The second section aims to broaden your understanding through the study of American Politics, comparing this to the UK and reaching a judgement about which system works best. Finally, you will look at the politics of ideas; at socialism, nationalism, feminism and anarchism amongst others.

Additional entry requirements

Minimum Grade 6 in English Language and/or History.

Learning methods

You will be taught through a variety of methods but a great focus in class will be on debate and discussion. In addition, there is an expectation that students will keep abreast of current affairs.

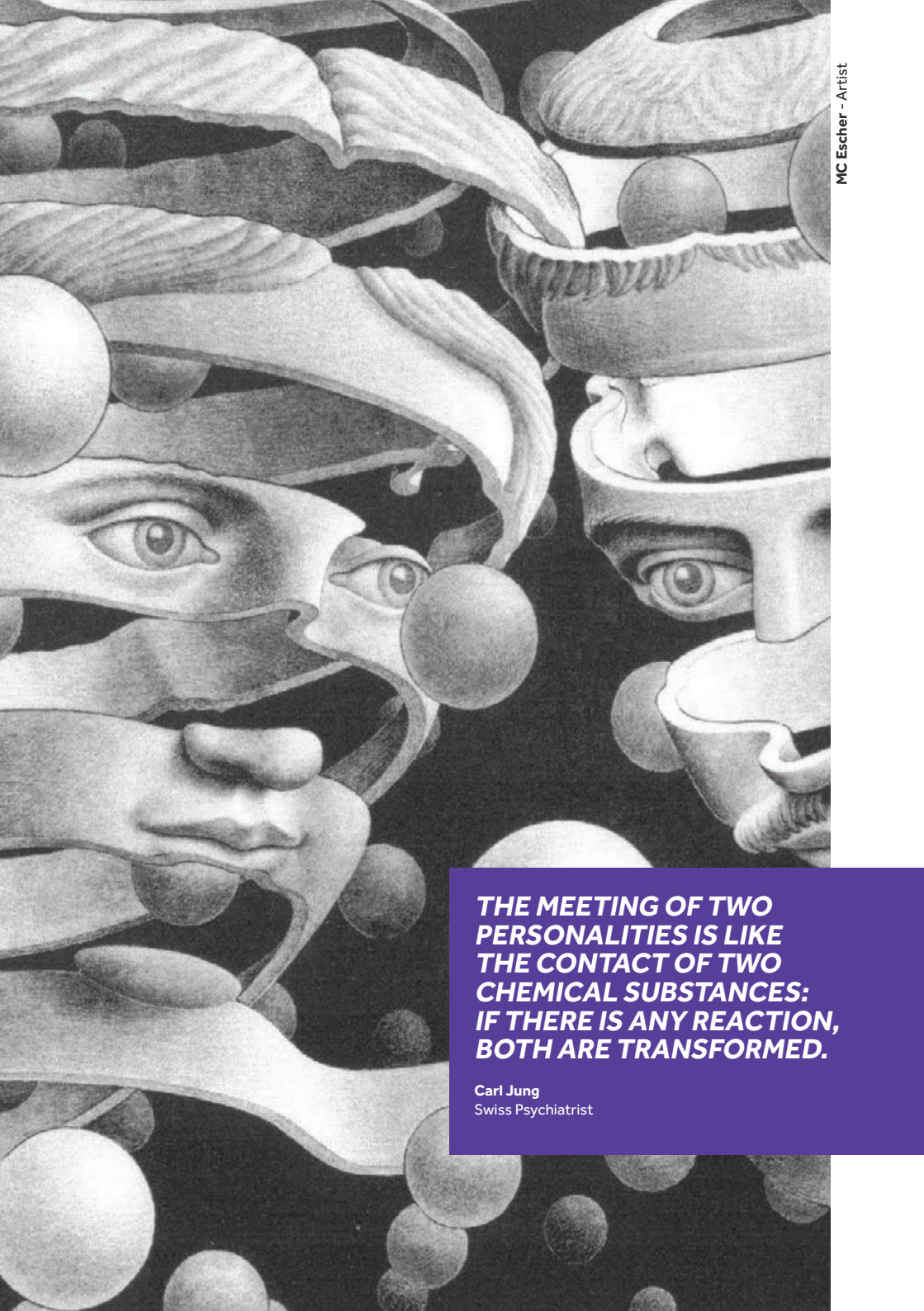
Assessment

A-level Politics is examined through three 2 hour papers, one on each section of the course. All exam papers contain a mixture of short response, extract based and essay style questions.

Future opportunities

A-level Politics is useful if you wish to study History or any social science, such as Economics, Business, Philosophy etc. at university. It is particularly useful for those interested in careers in the civil service, law, journalism and, of course, politics.





**THE MEETING OF TWO
PERSONALITIES IS LIKE
THE CONTACT OF TWO
CHEMICAL SUBSTANCES:
IF THERE IS ANY REACTION,
BOTH ARE TRANSFORMED.**

Carl Jung
Swiss Psychiatrist



Psychology

Psychology is the scientific study of the mind and behaviour that aims to explain how individuals and groups think, feel and act. This course will further your understanding of how conscious and unconscious forces guide our behaviour and enhance your knowledge of how and why mental illness may develop including how certain treatments look to overcome these issues.

Subject content

During your first year of study you will develop an understanding of the fundamental aspects of psychology including the different perspectives and approaches Psychologists might take to explain behaviour as well different methods of carrying out research. In addition to this, you will look at some other key areas within psychology including social psychology, memory, psychopathology and attachment.

The second year of study will allow you to apply the principles of psychology from year one to topics such as addiction, schizophrenia and gender. During this year you will consider how a range of approaches explain these key topics and critically analyse using key debates and supporting and conflicting evidence. Psychology is a fascinating yet complex discipline that will require a commitment to independent study.

Additional entry requirements

Minimum of 2 grade 5s in GCSE Combined Science or all three separate GCSE Sciences.

Learning methods

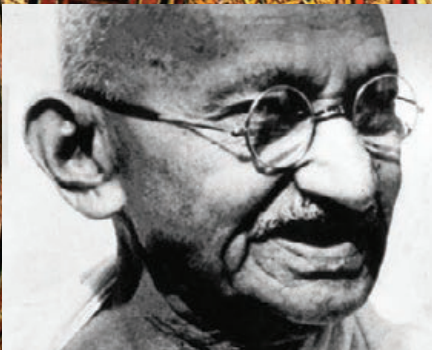
You will learn through lectures, group work, independent reading and research projects

Assessment

Assessment of both year 1 and year 2 content is by linear examination at the end of year 2. Additional assessments including internal examinations will be completed at regular intervals throughout the duration of the course.

Future opportunities

Psychology is a popular A-level choice and a subject that is much sought after by employers due to its multifaceted nature and its wide range of application. Psychology students have the ability to understand human behaviour and as a result have very successful careers in a wide range of industries, including business, management, human resources, teaching, social work and the legal system. The combination of analytical and evaluative skills combined with its high Science and Mathematical content make Psychology a respected A-level option among some of the UKs best higher education establishments. Some universities will allow A-level Psychology to contribute towards the minimum required science A-levels necessary for some courses.



**SEEK NOT GREATER
WEALTH, BUT SIMPLER
PLEASURE; NOT HIGHER
FORTUNE, BUT DEEPER
FELICITY.**

Mahatma Gandhi
Indian lawyer and anti-colonial nationalist





Religious Studies

A-level Religious Studies is designed to enable learners to develop an interest in, and enthusiasm for, a study of religion and its place in the wider world. You will follow the EDUQAS A-level specification which contains three components. These include a wide range of topics for consideration, including an in-depth and broad study of one of the six major world religions, philosophy of religion, religion and ethics. You will develop knowledge and understanding of one religion, develop an understanding and appreciation of religious thought and its contribution to individuals, communities and societies. You will also adopt an enquiring, critical and reflective approach to the study of religion, reflect on and develop your own values, opinions and attitudes.

Subject content

During the course, component one is the study of one religion. There will be four themes: Religious Figures and Sacred Texts; Religious Concepts and Religious Life; Significant Social and Historical Developments; Religious Practices. Component two is Philosophy of Religion. Within this unit there will be four themes: Arguments for the Existence of God; Challenges to Religious Belief; Religious Experience; Religious Language. The final component is Religion and Ethics. The themes are: Ethical Thought; Deontological Ethics; Teleological Ethics; Determinism and Free Will.

Additional entry requirements

Minimum grade 5 in GCSE RS (if previously studied).

Learning methods

You will learn through group work, lectures, seminars, essays, reading and research.

Assessment

Assessment is by examination at the end of the two year course.

Future opportunities

Previously, students following on from Religious Studies have gone onto university to study Theology & Religious Studies, Philosophy & Ethics, History and the Social Sciences (Psychology, Sociology, Criminology). Many graduates enter careers such as entering the Police Force and other public services, management, lecturing and teaching. The Russell Group of top universities has made it clear that A-level Religious Studies provides 'suitable preparation for university generally' and students are highly regarded in their applications.





ONE PERSON WITH A BELIEF IS EQUAL TO A FORCE OF NINETY-NINE WHO HAVE ONLY INTERESTS.

J.S. Mill
Social Philosopher



Sociology

Sociology is the study of society and is about understanding how and why society changes. This involves investigating topics as varied as the family, education, belief systems and crime. If you are interested in finding out why society is the way it is then this is the course for you!

Subject content

In Year 12 you will study the Sociology of Education where you will evaluate the impact a students' class, gender, ethnicity and their teachers can have on their educational attainment. You will also study 'Families and Households'. Key issues which are considered include whether husbands and wives are equal today in comparison to the past? How have patterns in marriage, divorce and cohabitation changed over time? In addition to these topics, you will also study how sociologists conduct sociological research and the strengths and weaknesses of research methods.

Year 13 concentrates on 'Crime and Deviance' where you will examine who commits crime as well as investigating reasons why they do so. You will also study 'Beliefs in Society' where you will evaluate reasons for the decline in religion and why people may choose to join religious movements such as sects and cults.

Additional entry requirements

Minimum grade 5 in GCSE English Language and/or GCSE English Literature. There is no requirement to have studied Sociology before.

Learning methods

You will learn through group work, discussions, debates, lectures and research projects.

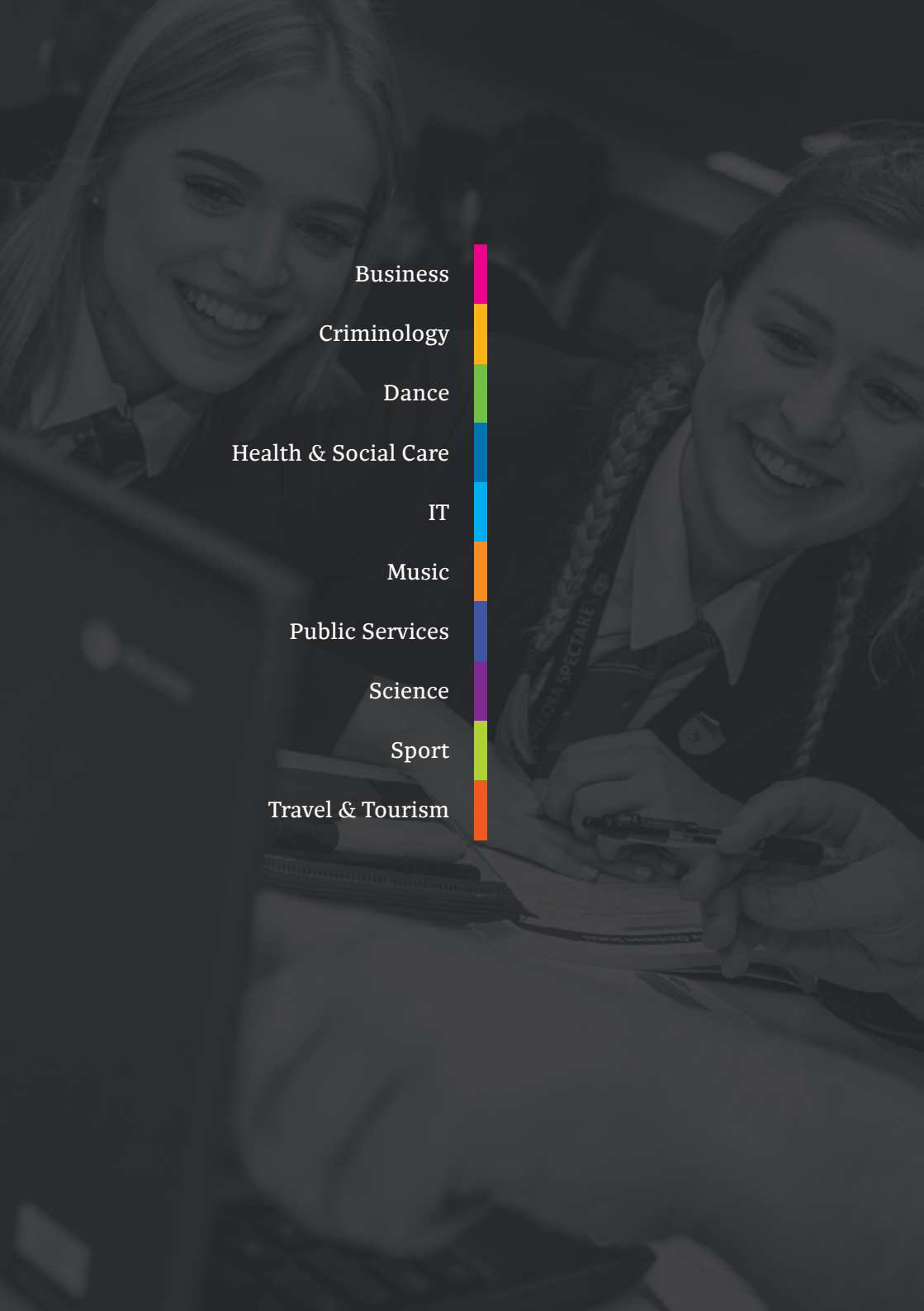
Assessment

You will be assessed by three 2 hour exams which are worth 33.3% of the final grade.

Future opportunities

Sociology is a popular A-level choice and can lead to students completing degree courses in a variety of subject areas including Criminology, English, Law, Psychology and Sociology itself. Sociology is relevant to a wide range of careers, particularly careers where analytical and evaluation skills are required such as journalism, social work, teaching and the law.





Business

Criminology

Dance

Health & Social Care

IT

Music

Public Services

Science

Sport

Travel & Tourism





Wath
Academy
Sixth Form

APPLIED

Qualifications

APPLIED - Qualifications



Sheryl Sandberg - Chief Operating Officer of Facebook



**I ALWAYS TELL PEOPLE
THAT YOU SHOULD
ONLY HIRE PEOPLE TO BE
ON YOUR TEAM IF YOU
WOULD WORK FOR THEM.**

Mark Zuckerberg
Chief Executive Officer of Facebook



Business

This course will give you a broad knowledge and understanding of businesses as well as the environment in which they operate. You will develop skills needed to become a decision-maker in business. You'll be able to demonstrate your knowledge and understanding in a way that suits you best.

Subject content

In the first year of the course you will complete two of the mandatory units for the qualification. The first unit is assessed through an assignment and is titled 'Exploring a Business'. Within this unit of study you will investigate a range of different businesses and how they operate. The second unit of study is titled 'Developing a Marketing Campaign'. Within this unit you will research a range of real marketing campaigns and then under supervised assessment conditions create your own for a given business scenario.

In the second year you will complete two further units, one of which is a written assignment and will allow you to investigate a specific area of a business. The second unit is a mandatory examination unit which assesses knowledge of personal and business finance. All four units must be completed at a pass level in order to achieve the qualification. Higher grades (eg Merit and Distinction) are available.

Learning methods

You will learn through lectures, research projects, group work presentations and mock assignments.

Assessment

Assignments, a supervised assessment and an examination.

Future opportunities

Studying BTEC Business will open up many options for you if you would like to go onto university, apprenticeship or directly into employment. You can study Business at university on its own or combine it with other subjects such as Law, Economics, Accounting, Mathematics, Travel and Tourism or a language. You can also go into a profession such as accountancy and start to work towards your professional qualification. Other careers to consider include marketing, events management and human resources. You may also decide to run your own business.





**THE TEST OF POLICE
EFFICIENCY IS THE
ABSENCE OF CRIME AND
DISORDER, NOT THE
VISIBLE EVIDENCE OF
POLICE ACTION.**

Sir Robert Peel
Former British Prime Minister



Criminology

Criminology is the study of crime from a social perspective and therefore looks at the causes of crime, the social impact of crime and the criminals involved in the crime. Criminologists study these in an attempt to understand why criminals commit crime as well as finding out why people react in certain ways to crimes. If you are interested in finding out more about how we are aware of crime along with finding out about why people may commit crime, how crimes are punished and how crimes end up in court rooms, then this is the course for you!

Subject content

In Year 12, you will study the **'Changing Awareness of Crime'** unit where you will assess whether we can trust statistics on crime, as well as investigating reasons for why some crimes are underreported. You will also investigate the impact the media has on our understanding of crimes within society. You will also study the unit **'Criminological Theories'**. Key issues which are considered, include questioning whether criminals are born or made. To investigate this topic you will study biological, sociological and psychological theories of criminality. You will also study ways in which crime can be prevented in society.

Year 13 concentrates on the unit **'Crime Scene to Courtroom'**. You will examine how crimes are investigated within society as well as exploring how evidence is processed and used in criminal cases. You will also study the unit **'Crime and Punishment'** where you will study the role of punishment in the criminal justice system. As part of this topic you will investigate what the aims of punishment are as well as studying the types of punishment and why they are used.

Additional entry requirements

Minimum grade 4 in GCSE English Language.

Learning methods

You will learn through a variety of methods, including teacher led lessons, research, group tasks and independent study.

Assessment

Assessment is by examination and controlled assessment. Students will complete two controlled assessment units, which are taken under supervised conditions and two external exams. All units are worth 25% of the final grade.

Future opportunities

Criminology is a popular and ever growing qualification, which can lead to students completing degree courses in a variety of related subject areas, such as Sociology, English, Law, Psychology and Criminology itself. Criminology is relevant to a wide range of careers, particularly careers where analytical and evaluative skills are required, such as journalism, teaching and the law.





**THE MAIN THING IS
DANCING, AND BEFORE
IT WITHERS AWAY FROM
MY BODY, I WILL KEEP
DANCING TILL THE LAST
MOMENT, THE LAST DROP.**

Rudolf Nureyev
Ballet Dancer



Dance Academy

This course will equip you with skills and experiences, which will help broaden your repertoire, theoretical knowledge and performance experience. You will study a variety of dance styles, professional dance works, practitioners and choreographers, which includes working with many professional artists. Rehearsals and performances are a huge part of the dance courses and will compliment your curriculum studies. There will be opportunities to attend audition workshops, create your show reel and obtain professional head shots and images for your professional portfolio.

Subject content

Students enrolled the Extended Diploma in Performing Arts: Dance (equivalent to 3 A-levels) will study a range of dance styles including Contemporary, Jazz, Ballet, Urban, African and Indian as well as fitness classes, strength and conditioning and yoga. All these elements will incorporate technique classes, performance pieces, choreography and theoretical appreciation of professional practitioners within each area. Your assessment within these units will include both practical and theory tasks and will be on going throughout the unit. You will work both individually and as an active member of a group, creating movement and developing pieces to create professional performances of the highest standard.

There is also the option to study the Foundation Diploma-Dance (equivalent to 1 A-level). This option is great if you would also like to explore various other subjects whilst studying at Wath.

Entry requirements

Students must have studied Dance at KS4 level and/or have attended a Dance School for at least 2 years. You must have some experience of Contemporary Dance as well as experience of performance, technique class and choreography in order to be successful on this course.

Learning methods

You will learn through practical technique, performance and choreography lessons as well as theory lessons. You will take part in group, paired and individual tasks and will work with a range of people.

Assessment

Assessments are practical technique, performance or choreography, controlled assessments and written assignments. Dance Enrichment is compulsory for Dance Academy students as this is where you will spend time looking at future steps, building your portfolio and creating audition material.

Future opportunities

This course will give you the opportunities and experiences to help you apply to a variety of Dance courses and become successful during independent auditions. Many of our dance students go on to study dance professionally. Dance gives you many transferrable skills that have enabled many of our previous students to go onto to study and work within numerous different sectors such as Nursing and Journalism.



THE NHS WILL LAST AS LONG AS THERE ARE FOLK LEFT WITH THE FAITH TO FIGHT FOR IT.

Aneurin Bevan
Founder of the NHS



Health & Social Care

The Health and Social sector is a major employer, employing almost four million people across the UK.

The health care sector includes examples such as hospital activities, medical nursing homes and GP services. The social care sector relates to residential nursing care, residential nursing facilities, residential care facilities, domiciliary care and social work.

The Pearson BTEC Level 3 National Extended Certificate in Health and Social Care is equivalent in size to one A-level. It is for students interested in learning about the health and social care sector alongside other fields of study.

The Pearson BTEC Level 3 National Diploma in Health and Social Care is equivalent in size to 2 A-levels and is for students wanting to progress directly into work in the health care sector, on achieving the qualification.

Subject content

Everyone taking either qualification will study three mandatory units, covering the following content areas: Human Lifespan Development (Exam), Working in Health and Social Care (Exam), Meeting Individual Care and Support Needs (Coursework) and Physiological Disorders (Coursework). Diploma students will also cover Enquiries into Current Research in Health and Social Care (Externally set task), Principles of Safe Practice in Health and Social Care (Coursework), Promoting Public Health (Coursework) and Supporting Individuals with Additional Needs (Coursework).

Learning methods

Students will learn through paired and group work, presentations and role play using a range of scenarios to apply theory to practice.

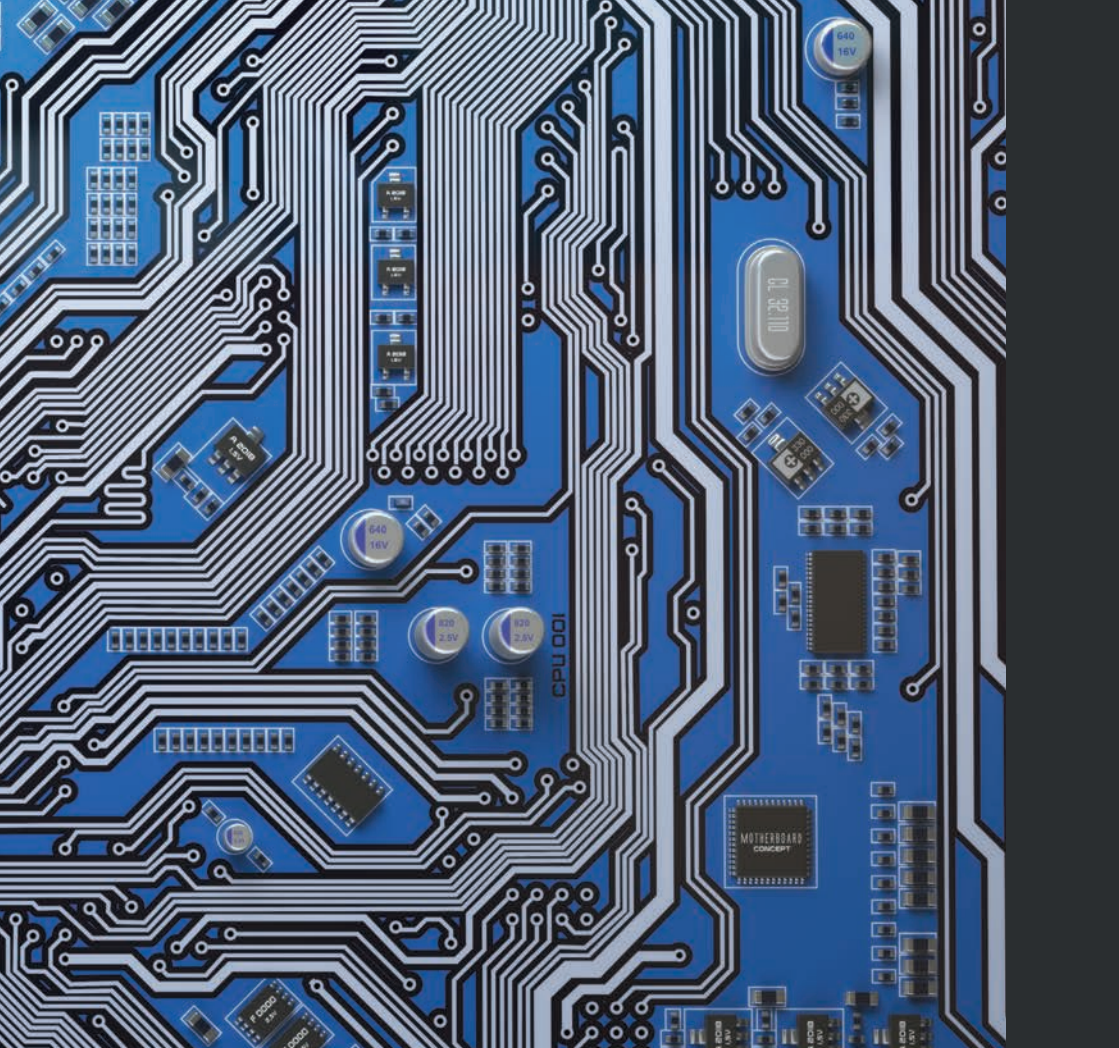
Assessment

Assessment is by examination and coursework. Students will take up to three external assessments depending on the course they follow. Students must pass all external assessments to achieve their final Level 3 grade.

Future opportunities

The qualification is intended to carry UCAS points and is recognised by Higher Education providers as contributing to meeting admission requirements to many relevant courses. Students are able to progress into work in the sector through degree programmes, such as nursing, midwifery, social work, physiotherapy, occupational therapy and pharmacy. There are more than 300 distinct career paths in this sector.





**DESIGN IS NOT JUST
WHAT IT LOOKS LIKE
AND FEELS LIKE. DESIGN
IS HOW IT WORKS.**

Steve Jobs
Founder of Apple



IT

You have an interest in IT and want to learn about software, hardware and how IT is used globally to increase productivity and share information. You will also have an interest in virtual and augmented reality.

This qualification is not just about being able to use computers, it is designed to give you a range of specialist knowledge and transferable skills, preparing you for employment within or further studying of IT.

Subject content

In Year 12 you will initially research the 'Fundamentals of IT' gaining a solid understanding of software, hardware, networks, the ethical use of computers and how businesses use IT. In January you will then sit an external examination. Your second task will be to explore information in the public domain, in the cloud and across the internet and how it is used by individuals and organisations. You will discover that good management of both data and information is essential in order to give an organisation a competitive edge, you will then sit the 'Global Information' paper in May of Year 12. Over the course of this year you will also complete a coursework unit on 'The Internet of Everything' looking at how the internet is impacting on people and society within the home, businesses and cities around the world. You will research, plan and present a proposal for a new device utilising this connectivity. In January of Y13 you will be given the opportunity to re-sit both examinations and will then complete two more units based around virtual and augmented reality, exploring simulated and enhanced environments, leading to you creating your own augmented reality

program. Alongside this unit you will plan your product and evidence its production.

Additional entry requirements

Must have an IT related qualification at level 2 of at least a Merit/GCSE grade 5.

Learning methods

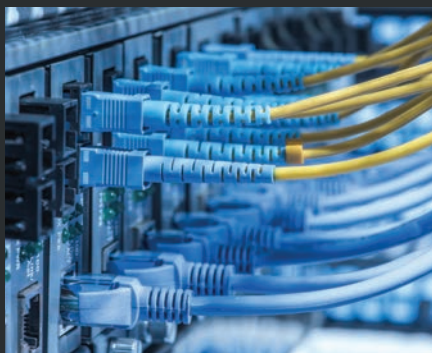
You will learn through group work, taught lessons, research projects and practical activities involving software and hardware.

Assessment

The course consists of five units, two are external examinations, and three are coursework. The qualification is graded Distinction*, Distinction, Merit or Pass.

Future opportunities

Typical roles within this pathway include; Junior Digital Content Developer, 3D Graphics Technician, Virtual Reality Software Technician, Software Development, Digital Identity Planners or Digital Content Developer.





**IN A TIME OF
CHIMPANZEES I WAS A
MONKEY.**

Beck (Loser lyric)
Singer / Songwriter



Music

This course will equip learners with the skills, knowledge and understanding for entry to employment in the music industry or progression to further study at a higher level. We are looking for students who are prepared to be self sufficient and independent (or be willing to learn these skills) in order to make improvements in their ability to recognise, rehearse and perform music effectively, in and out of the classroom. The RSL Subsidiary Diploma gives a flexible options to study units which cover areas of the music industry that you may be interested in pursuing as well as the opportunity to engage with employers.

Subject content

You will study how to perform effectively on your instrument or voice, how to rehearse effectively and display musicianship skills to perform music live, initiate and develop a repertoire of pieces of music, understand contextual issues relating to musical style, audience and the music industry and understand relevant aspects of music technology.

Over the two years you will develop your listening, planning, rehearsal and evaluation skills to be able to perform your repertoire to an audience, and have the ability to reflect upon all aspects of this course as you engage with it. In addition, you will have the opportunity to plan your career in your chosen area of the music industry.

Learning methods

You will learn through lectures, individual and group practical work, and research projects.

Assessment

In both years you will be assessed internally for two units and externally for one unit for a total of four internally assessed units and two external core units. Assessment will take the form of written assignments to log your progress in performance, written research projects and presentations, videoed performances and performances to an audience.

Future opportunities

The RSL Level 3 Subsidiary Diploma will equip you with specialist knowledge and skills, enabling entry to employment or progression to a related higher education course. Examples of occupations include; Songwriter, Recording Artist, Performer & Session Musician, Live Music Production, Promotion & Organisation, amongst many other careers and freelance options. It also supplies you with many transferable skills such as organisation & time management, evaluative skills, problem solving, public speaking, teamwork and many more.





JUSTICE WILL NOT BE SERVED UNTIL THOSE WHO ARE UNAFFECTED ARE AS OUTRAGED AS THOSE WHO ARE.

Benjamin Franklin
Founding Father of the United States



Public Services

This course will be an introduction to the uniformed Public Services sector: such as the police service, fire service, armed services and prison service. The qualification supports progression to higher education and a possible future career in the public sector. By studying a wide variety of topic areas that affect the UK services, it allows students to access a real insight into the challenges faced by our services, from dealing with the threat of war to creating new policies and legislation. Public Services is available as a single award (subsidiary diploma) or double award (diploma).

Subject content

Depending on the size of course selected, the different units available to study are listed below:

- Government, Policies and the Public Services
- Physical Preparation for the Public Services
- Crime and its Effects on Society
- Leadership and Teamwork in the Public Services
- Citizenship, Diversity and the Public Services
- Understanding the Impact of War
- Understanding Discipline in the Public Services
- Personnel and Human Resources
- Aspects of the Legal System and the Law Making Process
- Police Powers
- Command and Control
- Responding to Emergency Service Incidents

Learning methods

You will learn through group work, seminars, practical activities, independent research projects.

Assessment

All assessments are through submission of coursework. This can be completed through written reports, presentation and practical work.

Future opportunities

Following on from studying Public Services, students have gone on to university to study courses such as Policing, Law and Criminology whilst others have joined the Royal Navy, Royal Air Force or the Police Specials to gain experience before becoming a paid member of the force.





Aurora from orbiting satellite - Nasa



**THE SCIENCE OF TODAY
IS THE TECHNOLOGY
OF TOMORROW.**

Edward Teller
American-Hungarian Physicist



Science

This course is designed to provide you with a deeper insight and understanding of a wide range of scientific concepts. It will allow you to develop new practical skills using specialist scientific equipment and allow you to analyse results, draw conclusions from data and evaluate techniques. The course encourages the development of transferable skills such as communication, teamwork, research and analysis, which are valued in both higher education and the workplace.

Subject content

The course covers many areas of science across all three disciplines.

In Biology, you will learn more about cell biology, the role of the different organelles and about tissues. In Chemistry, you will cover titrations and mole calculations, atomic structure and bonding. In Physics, you will cover waves, their different forms and their uses. You will also learn about energy transfers including research into and the presentation of cooling curves.

The topic areas covered in unit 1 include animal and plant cells, atomic structure and bonding, and waves and their application in communications. For unit 3, learners will have to independently plan investigations; collecting and presenting data and clearly communicating their findings. There is a final unit that will cover the cause and treatment of infectious diseases and the role the immune system plays in defending our bodies from pathogens.

Additional entry requirements

Minimum of 2 grade 5s in GCSE Combined Science and ideally a minimum grade 5 in GCSE Maths.

Learning methods

You will learn through teacher led activities, group work and independent study to complete assignments and prepare for the external exam.

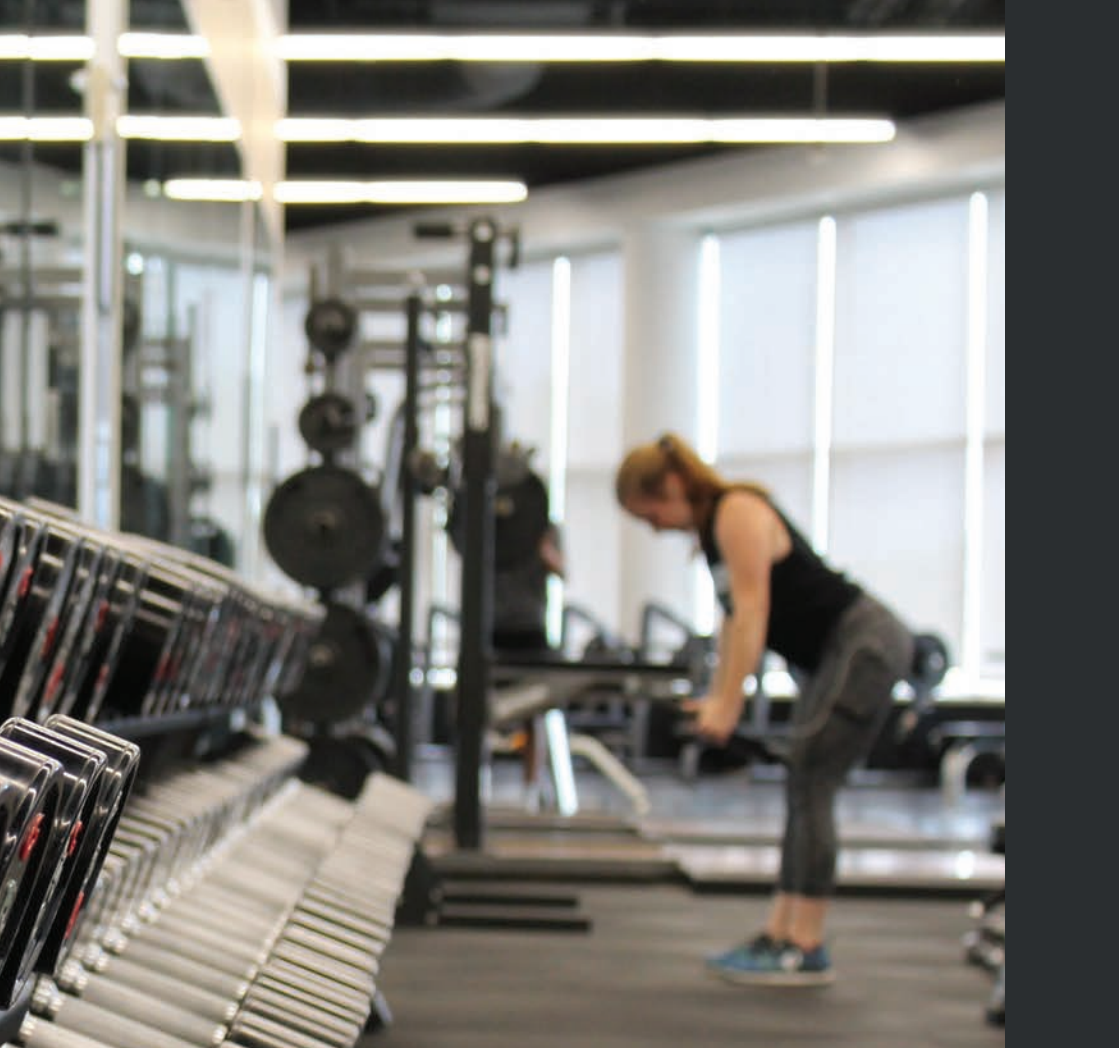
Assessment

Assessment is by examination for Unit 1 and synoptic assessment for Unit 3 of your qualification along with two units assessed purely by assignment.

Future opportunities

Level 3 Applied Science will help students develop practical skills such as the use of scientific equipment, planning investigations, risk assessment and presentation of data. In addition, students will be taught to analyse data appropriately and to research and analyse written information in a variety of forms and contexts. As a result, it is a good grounding for many Higher Education courses as these skills are transferable to other areas of study.





**DON'T DREAM OF
WINNING, TRAIN
FOR IT.**

*Mohamed Farah
Olympic Champion*



Sport

The BTEC Sport course is a versatile, recognised UCAS qualification that has helped lots of students at Wath move on to higher education to study a sport based course at university. You will learn through a combination of physical activity sessions, classroom based lessons and work based experience. Be prepared for hard work, including report based assignments, but be ready for an enjoyable course that does allow you to learn the skills needed in the sports industry.

Subject content

Over 2 years you will study 9 units for the Diploma (worth 2 A-levels) and 4 units for the Extended Certificate (worth 1 A-level). Both courses cover areas from Anatomy and Physiology, Sports Leadership to a Work Experience based project. Unit 1 is an examination unit where you will have to apply the knowledge you have learnt about the body in a 2 hour examination. You will also be assessed in Year 13 by a synoptic question paper. For this you will receive a case study before the examination, which you will use to prepare for questions that will take knowledge from the whole course. You must receive at least a Pass grade in units 1 and 2 to be able to pass the course overall. All the other units are coursework based, where you will complete tasks and assignments to meet the unit criteria. These other units include a selection from Practical Sport, The Sports Industry, Application of Fitness Testing, Sports Leadership, Sport Psychology, Coaching for Performance, Work Experience and Sports Performance Analysis.

Additional entry requirements

Experience of GCSE PE or BTEC Sport would be a good advantage to students taking the course, but are not essential.

Learning methods

You will learn through group work, lectures, practical work, research projects and practical sport experience.

Assessment

Assessment is by examination for unit 1 and 2 (and Unit 22 if studying the Diploma). The rest of the course is assessed through coursework.

Future opportunities

Students can use BTEC Sport to access jobs in the leisure industry. While others use the UCAS points alongside other BTEC's or A-levels to go to university to study a sport course.





DESTINATION	AIRLINE	FLIGHT NUMBER	GATE	STATUS	
DALY	VA887	NZ3456	03	DEPARTED	
AKARTA	VA887	NZ3456	03	DEPARTED	
NIHA	VA887	NZ3456	03	DEPARTED	
OH	FY3542	MH5468	08	GATE CLOSED	
IGKOK - BKK	S0872	LX4154	03	GATE CLOSED	
	VA5571	NZ3448	SK8019	03	GATE CLOSED
IRANG	M1102	GA9450	04	GATE CLOSED	
	S05102	VA5872	04	GATE CLOSED	
JI MINH	S0178	NZ3456	03	GATE CLOSED	
	VA5478		03	GATE CLOSED	
LUMPUR	MH604	FY7322	02	GATE CLOSED	
	M15704	S05604	02	GATE CLOSED	
JI MPUR	TR2454		11	GATE CLOSED	

THERE IS SOMETHING ABOUT THE MOMENTUM OF TRAVEL THAT MAKES YOU WANT TO JUST KEEP MOVING, TO NEVER STOP.

Bill Bryson
Author / Travel Journalist



Travel & Tourism

This qualification gives a broad introduction to those students who are interested in learning about the travel and tourism industry. There is an emphasis on core knowledge and fundamental skills that are transferable across other sectors and qualifications.

Subject content

Unit 1 Unit 1 is designed to give you a broad overview of the World of Travel and Tourism and provides a foundation for your studies. You will look at how the industry is organised, its key components, the roles of organisations as well as how those organisations fit together to benefit customers. You will also look at the factors that are influencing the industry today.

Unit 2 looks closely at Global Destinations, giving you a good understanding of the geographical features that affect the travel and tourism industry, looking at why and how they appeal to different customers. You will also look at the advantages and disadvantages of different travel and transport options.

Unit 3 is all about understanding how to provide high quality customer service, and investigating the different methods used to monitor and improve that customer service. You will develop practical skills and use feedback to evaluate your own performance.

Unit 4 is focused on Visitor Attractions. These are an important part of the Travel and Tourism industry, and you will examine their appeal and popularity. You will research, collate data and make decisions about the importance and effectiveness of visitor attractions.

Learning methods

You will learn through teacher led activities, group work and independent research and study tasks, in order to complete a range of assignments and prepare for the examination.

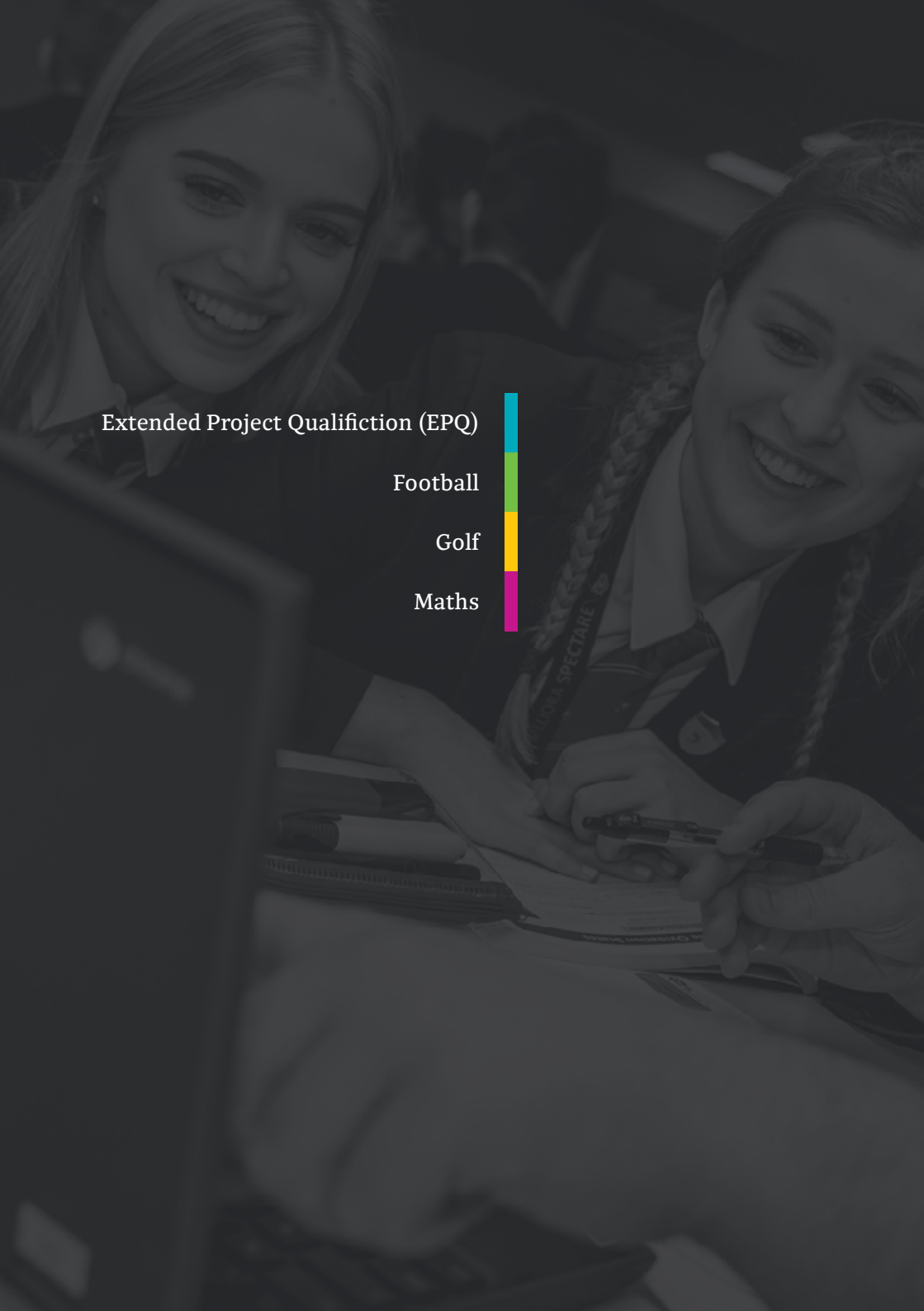
Assessment

Assessment is an examination for Unit 1 (The World of Travel and Tourism) and a pre-release examination for Unit 2 (Global Destinations). Unit 3 (Managing the Customer Experience) and Unit 4 (Visitor Attractions) are both internally assessed components.

Future opportunities

On successful completion, you may go onto Higher Education or into employment. Past students have secured vocational training such as Air Cabin Crew and working as Tour Representatives with respected travel organisations, in addition to a much wider range of degrees courses.





Extended Project Qualification (EPQ)

Football

Golf

Maths





Wath
Academy
Sixth Form

ENRICHMENT

Opportunities

ENRICHMENT - Opportunities



***I FIND THAT THE HARDER
I WORK, THE MORE LUCK I
SEEM TO HAVE.***

Thomas Jefferson
3rd U.S. President (1801 - 1809)



Extended Project Qualification (EPQ)

This course is designed to deepen your understanding of a topic entirely of your own choice. Your chosen topic can be linked to a personal interest, a subject you enjoy, or a course you plan to study at degree level. Under the supervision of your Extended Project teacher, you will design and shape your project into an end product, which could take the form of an essay, an investigation or an artefact. You will then present this to a non-specialist audience. This course is perfect if you enjoy working creatively within your own time limits to create an independent project.

Subject content

You will be taught a wide range of skills relating to research methodologies during 30 hours of taught lessons. These will include skills in planning and designing a project, such as formulating clear aims and hypotheses. You will also learn about research and referencing, such as how to reference using the Harvard system. In addition, you will develop skills in problem solving, synthesising and evaluating information and time management. There is also a presentation element to the course, in which you will learn valuable skills in speaking and listening. In addition to the 30 hours of taught lessons, you will also have regular meetings with your Extended Project teacher, where you will discuss your project and receive advice and guidance about how to shape and develop your project. Essay or investigation projects have a word count of 5,000 words. Artefact products must produce something, such as a piece of

artwork, and have an accompanying report of at least 1,000 words.

Additional entry requirements

Minimum grade 5 in GCSE English Language.

Learning methods

You will learn through lectures, group work and discussion, individual meetings with your teacher, and through independent research.

Assessment

Assessment is by coursework.

Future opportunities

The Extended Project is an extremely versatile AS-level choice and is highly regarded by Higher Education establishments, because it teaches skills in creativity, problem solving and independence. It can be tailored to fit with any future degree choice.





**I CAN MAKE PEOPLE
HAPPY AND ENJOY
MYSELF AT THE
SAME TIME.**

Ronaldinho
Footballer



Football

An outstanding football experience which offers a unique opportunity for highly talented, male and female footballers aged 16-18, to further develop their football education, in addition to their academic studies. The scholarship provides access to UEFA A and B Licenced coaching in both outfield and goalkeeping provisions.

Subject content

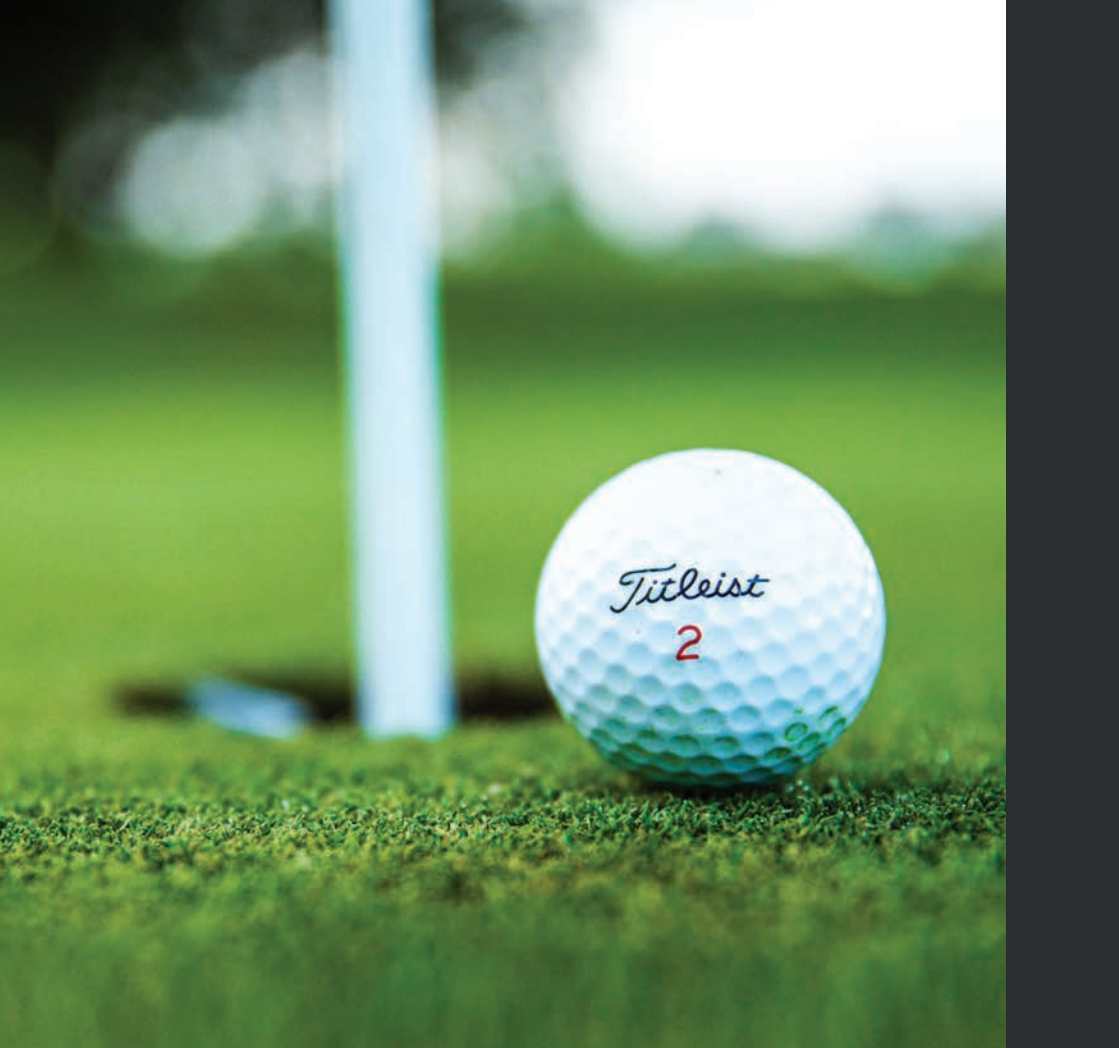
All players on the Wath Academy Football Scholarship will undertake A-levels or Applied qualifications alongside their football programme. The scholarship will provide students with the following:

- Work based qualifications including either a FA Level 1 Coaching badge in Football or ■
- Referee's Qualification
- Five days contact time, including match days and training
- Strength and conditioning sessions
- Player and match analysis
- Players will find relevant pathways to continue their football post sixth form
- Enrichment opportunities, including visits and tours
- Work experience opportunities

Additional entry requirements

Players will trial on their assigned night, throughout the academic year, which will be boys on a Tuesday 3pm – 5pm and girls on a Thursday 3pm – 4.30pm. Once the trial process is over, players are welcome to access the training until the start of their Sixth Form education.





**ACHIEVEMENT IS
LARGELY THE PRODUCT
OF STEADILY RAISING
ONE'S LEVEL OF
ASPIRATION AND
EXPECTATION.**

Jack Nicklaus
Professional Golfer, winner of 18 majors



Golf

An outstanding golf experience which offers a unique opportunity for highly talented 16-18 year old golfers to further develop their golf education in addition to their academic studies. The scholarship provides access to elite level practice facilities via Waterfront Golf and lessons from PGA qualified coaches.

Subject content

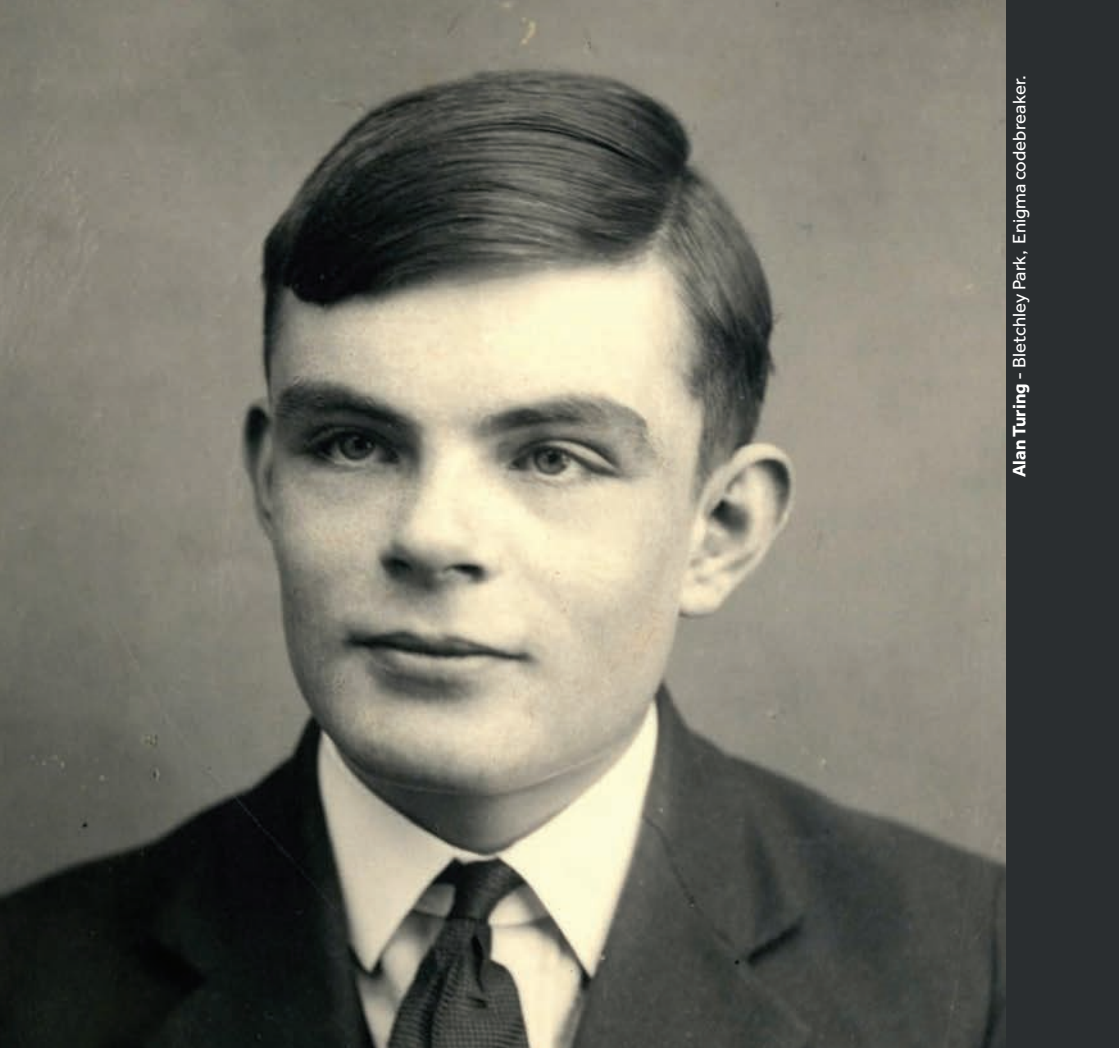
All those enrolled onto the scholarship programme will undertake A-levels or Applied qualifications alongside their golf programme. The scholarship will provide students with the following:

- A personalised golf coaching programme (8 hours per week), individually or in small groups, developed and delivered by PGA qualified coaches
- Access to state of the art practice facilities including floodlight driving range and short game area
- The use of TrackMan and FlightScope technology
- Access to club competitions and college matches within the British Schools and Colleges League
- Golf Membership provided, meaning full use of the course all year round
- Work experience opportunities

Additional entry requirements

Places are subject to level of handicap (18 and below for males, 28 and below for females).





Alan Turing - Bletchley Park, Enigma codebreaker.



**IT IS POSSIBLE TO
INVENT A SINGLE
MACHINE WHICH CAN
BE USED TO COMPUTE
ANY COMPUTABLE
SEQUENCE.**

*Alan Turing (1912-1954)
Mathematician*



Maths

LEVEL 3 CERTIFICATE - CORE MATHS

Using mathematics creatively to address authentic problems, communicating, thinking clearly and evaluating quantitative statements are features of this qualification.

Subject content

The qualification is equivalent to an AS-level and taken over 2 years. It will give learners the mathematical skills to tackle problems in a range of authentic situations. Learners will strengthen their mathematical knowledge and skills, which they learnt at GCSE, and apply them to problems which they will come across. The use of technology – in particular, spreadsheets – is an integral part of the course.

Additional entry requirements

It is essential that students have achieved a grade 5 in GCSE Maths.

Learning methods

You will learn through teaching, discussions, independent work and group work.

Assessment

Assessment is by 2 written examinations with pre-release material.

Future opportunities

Core Maths is designed to support post-16 learners with the mathematical and statistical needs of their further study of other subjects, as well as for employment and everyday life. The course is valuable to learners preparing for a variety of technical and professional roles, as they learn about mathematical modelling, costing, risk and the use of spreadsheets.

AS-LEVEL - FURTHER MATHS

If you love Mathematics, enjoy the challenge of making the connections between a range of topic areas and find algebra fascinating, this course is for you!

Subject content

You will study topics in Pure Mathematics, Statistics and Mechanics that build on from your A-level Maths studies. Initially the course gives a breadth of study, learning further algebraic techniques and proof alongside mathematical modelling of real world situations. Later, students focus much more on extending their repertoire of analytical methods and developing their knowledge and understanding of pure mathematics.

Additional entry requirements

You need to be studying A-level Maths and have a minimum grade 8 in GCSE Maths.

Learning methods

You will learn through direct teaching, discussion, independent work and group work.

Assessment

Assessment is by written examinations at the end of the course.

Future opportunities

AS-level Further Maths is an additional qualification, ideal if you are intending to study Maths, Sciences or Engineering at university. Graduates go on to have a wide range of careers in any job where logical thought and problem solving are required such as business, accountancy or computing.



Wath
Academy
Sixth Form

Alumni:

James Dyer

James was studying Automotive & Transport Design at Coventry University and is currently completing a Management Graduate Scheme at Kite Packaging.

Studied:

- A-LEVEL - Economics
- A-LEVEL - English Language
- A-LEVEL - General Studies
- A-LEVEL - Product Design



***"THE BEST THING
ABOUT MEMORIES
IS CREATING
THEM".***



Wath
Academy
Sixth Form

Alumni:

Jordan Allsop

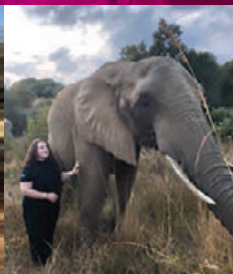
Jordan is studying Veterinary Medicine and Science at the University of Surrey and is currently on placement in South Africa.

Studied:

A-LEVEL - Biology

A-LEVEL - Chemistry

A-LEVEL - Geography



"DON'T LET ANYBODY TELL YOU YOU CANNOT DO ANYTHING, IF YOU WORK HARD ENOUGH YOU WILL ACHIEVE YOUR GOALS".



Wath
Academy
Sixth Form

Alumni:

Camille Oxberry

Camille achieved a First Class Honours Degree in Interior Architecture at Sheffield Hallam University and is currently working as an Interior Designer.

Studied:

A-LEVEL - Art

A-LEVEL - German

A-LEVEL - Psychology



**"CREATE
SOLUTIONS
NOT EXCUSES".**



Wath
Academy
Sixth Form

Alumni:

Luke Sanders

Luke achieved First Class Honours Degree in Digital Media Production at Sheffield Hallam University.

Studied:

BTEC - IT

A-LEVEL - Media Studies

BTEC - Travel and Tourism



***"IF YOU WANT TO
DO SOMETHING
AND YOU GENUINELY
THINK IT'S A GOOD
IDEA, DO IT".***



Index

A-LEVEL QUALIFICATIONS

3D Product Design	P.15
Art & Design	P.17
Biology	P.19
Business	P.21
Chemistry	P.23
Computer Science	P.25
Drama & Theatre Studies	P.27
Economics	P.29
English Language	P.31
English Literature	P.33
Geography	P.35
History	P.37
Law	P.39
Mathematics	P.41
Media Studies	P.43
Modern Foreign Languages	P.45
Physical Education	P.47
Physics	P.49
Politics	P.51
Psychology	P.53
Religious Studies	P.55
Sociology	P.57

APPLIED QUALIFICATIONS

Business	P.61
Criminology	P.63
Dance Academy	P.65
Health and Social Care	P.67
IT	P.69
Music	P.71
Public Services	P.73
Science	P.75
Sport	P.77
Travel & Tourism	P.79

ENRICHMENT OPPORTUNITIES

Extended Project Qualification	P.83
Football	P.85
Golf	P.87
Maths	P.89

Wath Academy Sixth Form Team

Providing advice, guidance and support for all matters relating to your sixth form studies and pastoral care.



Mr C Shaw
Head of Sixth Form



Miss L Slasor
Deputy Head of Sixth Form



Mr M Barlow
Assistant Head of Sixth Form



Miss E Hodgson
Assistant Head of Sixth Form



Mrs H Potts
KS5 Student Support Leader



Mrs K Parker
Sixth Form Administrator



Delivering
exceptional learning
experiences that
enable all young
people to thrive in
a competitive world
and lead successful
and fulfilling lives

Wath Academy Sixth Form
Sandygate, Wath Upon Dearne, Rotherham, South Yorkshire. S63 7NW

T: 01709 760222 | F: 01709 761094 |
E: sixthform@wathacademy.com | W: www.wathacademy.com